

Regular Meeting of the Board of Directors

9751 Merced Falls Road
September 19th, 2016, at 1:00 p.m.

Mission Statement: *The Lake Don Pedro CSD is dedicated to providing our customers with ample quantities of high quality water meeting all standards, in a fiscally responsible manner.*

AGENDA

1. CALL TO ORDER: Presiding Officer: Establish Quorum, Pledge of Allegiance:

2. PUBLIC COMMENT:

Any person may address the Board at this time on any matter within the jurisdiction of the Board that is NOT ON THE AGENDA. A maximum of **three minutes** is allowed each person and a maximum of 20 minutes per topic. Any person wishing to address the Board on an item ON THE AGENDA will be given the opportunity at that time. Speakers are encouraged to consult District Management or Directors prior to agenda preparation regarding any District matters, as no action will be taken on non-agenda issues.

3. PRESENTATION ONLY:

- a. Presiding Officer's Report
- b. General Manager's Report: Peter J. Kampa
- c. Chief Plant Operator's Report: R. Gilgo

4. APPROVAL OF CONSENT AGENDA: The following items may all be approved in one motion or considered separately as determined appropriate by the President

- a. Read and file the August 2016 Treasurer's Report
- b. Approval of the Minutes of the Regular Board Meeting Aug 15, 2016
- c. Read and File California Environmental Quality Act (CEQA) Notice of Exemption Filed for the Water Service Line Replacement Project and Intake Booster Pump Installation Project

5. DISCUSSION AND ACTION ITEMS

- a. Adopt Resolution Approving a New District Policy on Merit Salary Increases
- b. Review and Discussion Regarding Implementation of a Maintenance Program and Standards for District Infrastructure
- c. Status Update Report on the Implementation of the Intake Booster Pump Installation and Approval of Addition of an Intake Surge Tank Bypass Pipeline Connection.
- d. Status Update Report on the Implementation of the Water Service Line Replacement Project
- e. Review a report of the Emergency Groundwater Well Project Budget to Actual Expenses and Consideration of Approval of a Related 2016-17 Budget Amendment
- f. Status Update Report Regarding the Determination of Applicability of Retiree Medical Benefits for Certain Employees
- g. Informational Presentation Regarding the establishment and location of District Boundaries, Sphere of Influence and Lake McClure Place of Use Boundaries.

6. DIRECTORS COMMENTS:

Any Director may address the Board on any item of interest that is within the subject matter and jurisdiction of the District. Generally, no discussion or comment by other Board members should be expected on non-agenda items, except to properly place the matter on a future agenda for review, discussion or action as appropriate.

7. ADJOURNMENT:

Meeting agendas and written materials supporting agenda items, if produced, can be received by the public for free in advance of the meeting by any of the following options:

- A paper copy viewed at the District office, 9751 Merced Falls Rd., La Grange, CA 95329 during business hours or mailed pursuant to a written request and payment of associated mailing fees
- An electronic copy received by email. Note - a form requesting email delivery of agendas and/or meeting materials must be completed a minimum of one week in advance of the meeting
- Viewed on the Board page of the District's website
- A limited number of copies of agenda materials will also be available at the meeting

Americans with Disabilities Act Compliance: If you require special assistance to participate in Board Meetings, please contact the LDPCSD Board Secretary at (209) 852-2251 Ext. 2. Advance notification will enable the District to make reasonable arrangements to insure accessibility.



Lake Don Pedro Community Services District General Manager's Report

July 18, 2016


The written GM report will be delivered prior to the Board meeting



UTILITY COST MANAGEMENT LLC

www.utilitycostmanagement.com

August 19, 2016

RECEIVED
AUG 23 2016
BY: 

Peter Kampa, General Manager
Lake Don Pedro Community Services District
9751 Merced Falls Road
La Grange, CA 95329-8632

RE: Electricity Account Audit

Dear Mr. Kampa:

Utility Cost Management LLC (UCM) has completed its review of the Lake Don Pedro Community Services District electric accounts. At the present time, UCM cannot offer recommendations that will decrease the district's utility expenditures in the future, nor have we identified errors in past billings. In short, the charges appear to be appropriate under currently applicable Pacific Gas and Electric (PG&E) rates and the regulations of the California Public Utilities Commission (CPUC).

While UCM was not able to identify savings for the Lake Don Pedro Community Services District, we thank you for the opportunity to review the bills.

Please feel free to contact me if you have any questions.

Sincerely,



Dara Kerkorian



LAKE DON PEDRO COMMUNITY SERVICES DISTRICT

OPERATIONS SUPERVISOR REPORT

Board of Directors Meeting
Monday, September 19th 2016

During the month of August, much of our time was spent operating and maintaining the treatment plant and locating a significant water leak on the treatment plant grounds which has hindered the completion of the water meter cut in installation for the treatment plant. Locating and repairing this leak has been very troublesome and had required some assistance of outside contractors and rental of specialized equipment. Staffs' remaining available time was used responding to customer service requests and performing some system maintenance.

We had a total of thirty seven customer service requests in the month of August. Twenty four of them were meter related requests. Meter reads, lock/unlock, install or remove, etc. Seven for reporting/locating leaks. Some of these were duplicated due to different customers reporting the same leaks. These leaks were repaired soon after being reported. Three requests were concerning customers with high or low pressure and the remaining requests were quality related due to the main break on Banderilla.

If the Board and community are not yet aware, we had a massive water main break just North West of the intersection of Banderilla and Ranchito that occurred in the early morning hours on August the 26th. A four foot section of the ten inch main had to be replaced due to the main sitting on a large six foot boulder. Repairs began immediately and were completed in about eight hours or so. Before repairs could begin a massive amount of water had been lost out of three of our tanks causing a large number of customers to have very low water pressure or no water service at all. I estimated that during the time of the response and repair the district suffered a loss of about two million gal of water. Service was restored to all customers around 8 P.M. that evening. Following reestablishing service to our customers there were a couple of customers that had reported dirty water in their lines. These customers were advised to flush their lines for about 10 minutes and if it did not clear up to let it settle overnight. I also explained to

them that after putting the water mains back into service we had to flush hydrants in affected areas and that would cause the sediment to be disturbed and it would clear up.

Maintenance on the treatment plant still consisted of daily cleaning and calibrating of all our process analysis equipment. As mentioned before, most of our time was dedicated to locating a leak on the plant grounds that had stopped progress on the installation of the plants new flow meter. This leak had all staff and even engineers confused as to where the water could be coming from but it has since been located and repaired. Further planning and coordination will be needed to complete this project as we have run into a couple of issues involving water lines and some high voltage power lines that need to be relocated before installation can be completed. I will update everyone on progress of these projects as I get the information.

As mentioned in last month's report our water supply is still looking good. The lake is dropping as expected but at this point we are in no danger of running out. With the levels starting to drop there will be some time required a day or so a week to go back to moving the barge and adding pipe. As of the date of this report, I have not heard of any unexpected releases or dramatic lake level drops.

Randy Gilgo
Water Operations Supervisor/Chief Operator
Lake Don Pedro C.S.D.

MID OUTSIDE PLACE OF USE METERED PROPERTIES
2016

Account #	Customer	Dec-15	Jan-16	Feb-16	Mar-16	Apr-16	May-16	Jun-16	Jul-16	Aug-16	Sep-16	Oct-16	Nov-16	Dec-16
1 5004	DOSCHER	0	0	0	0	0	0	0	0	0	0	0	0	0
2 5009	DOSCHER (BOAT STOR)	10	8	7	9	8	9	6	7	7	7			
3 5057	COBARRUBIA	2	0	0	0	0	1	12	7	7	7			
4 5188	PARSONS	0	0	0	1	0	2	0	0	0	0			
5 100771	HILLS	X	X	X	X	X	X	X	X	X	X			
6 5443	CARPENTER	19	0	7	8	8	2	16	6	2				
7 5444	ELEM. SCHOOL	22	22	29	26	62	87	93	82	105				
8 5470	SHEPHERD	12	14	10	14	12	13	40	6	8				
9 5477	(AT&T)	0	1	0	0	1	0	1	0	1				
10 5481	C.D.F.	8	7	6	5	5	10	17	13	16				
11 101328	HALL	3	4	4	6	7	10	15	19	18				
12 5695	OLIVER	0	1	1	1	4	0	6	6	3				
13 101662	ROSEMIRE	12	9	11	7	20	27	42	50	46				
14 5754	ARTMAN	6	10	9	5	8	8	14	18	19				
15 5908	CLARK	2	0	0	0	6	7	12	14	26				
16 5910	DANIELSEN	4	3	5	3	5	7	10	10	13				
17 5927	ARNDT	0	0	1	0	0	0	0	5	5				
18 100237	HENDERSON	14	12	12	11	12	15	55	24	28				
19 5980	LAWSON	5	4	5	4	6	8	64	63	66				
20 101770	LAWSON (RENTAL)	6	4	4	4	4	4	6	6	4				
21 101815	BOWDEN	10	10	15	12	10	13	34	24	54				
22 6026	PONZO	0	0	0	0	0	0	0	0	0				
23 101143	MARTIN	X	X	X	X	X	X	X	X	X				
24 101333	KELLER	0	0	3	3	6	0	0	0	0				
25 6237	DUMAS	15	6	6	5	5	7	11	7	6				
26 6238	ROSS	10	6	3	5	7	2	7	8	10				
27 6245	ROSS	41	5	9	3	5	16	43	47	48				
28 100687	Bozsik	20	18	16	12	14	22	40	47	46				
29 101072	*KENNER	0	4	5	5	12	0	13	4	10				
30 6259	*STONE	4	3	5	5	5	3	12	17	13				
31 100872	BURLARLEY	8	7	6	4	5	6	13	18	19				
32 100181	RAYHER	7	6	6	5	12	10	12	16	15				
33 101248	WALKER	0	0	0	50	69	65	72	53	49				
34 101803	KELLER	0	0	0	0	0	0	0	0	0				
100473	TOTAL													
35	D P WASTE WTR	2	148	12	27	24	24	30	19	16				
TOTAL	TOTAL UNITS (CCF)	242	312	197	235	342	378	696	596	660	0	1033	0	0
TOTAL	ACRE FEET	0.556	0.716	0.452	0.539	0.785	0.868	1.598	1.368	1.515	0.000	2.371	0.000	0.000

Lake Don Pedro Community Services District

Regular Meeting of September 19th, 2016

AGENDA SUPPORTING DATA

4. APPROVAL OF THE CONSENT AGENDA

- a. Read and File the August 2016 Treasurer's Report
- b. Approval of the Minutes of the Regular Board Meeting of August 15, 2016
- c. Read and File California Environmental Quality Act (CEQA) Notice of Exemption filed for the Water Service Line Replacement Project and Intake Booster Pump Installation Project

Recommended Motion

Staff recommends the following motion:

I move to approve the Consent Agenda as presented.

Background

The August 2016 Treasurer's report and August 15, 2016 Board meeting minutes are attached hereto for your review. The Treasurer's report was not available at the time of preparation of this staff report, and I had intended to prepare a narrative description of any anomalies contained in the report. The brief narrative will be prepared and forwarded to the Board once completed before the meeting.

Also to be delivered at the Board meeting for review and information only is a copy of the California Environmental Quality Act (CEQA) Notice of Exemption filed for the Water Service Line Replacement Project and Intake Booster Pump Installation Project. No Board action is required on this item as the Notice has already been prepared and filed with the State and County. This item is presented to provide an understanding to the Board of the complexity of the regulatory requirements for building any type of public works project in California.

Regular Meeting Minutes of the Board of Directors

9751 Merced Falls Road
August 15th, 2016, at 1:00 p.m.

1. **CALL TO ORDER:** Presiding Officer: Establish Quorum, Pledge of Allegiance:
The Board of Directors of the Lake Don Pedro Community Services District held a regular meeting at 9751 Merced Falls Rd., La Grange, CA 95329.
President Johnson called the meeting to order at 1:02 p.m.
Directors present: Johnson, Hankemeier, Sult, Warren, and Ross
Also present: IGM P. Kampa
Also present: Staff R. Gilgo
Also present: Staff S. Marchesiello
2. **PUBLIC COMMENT:**
One public member spoke
3. **PRESENTATION ONLY:**
 - a. Presiding Officer's Report
None given at this time
 - b. General Manager's Report: Peter J. Kampa
Presented by GM P. Kampa
 - c. Chief Plant Operator's Report: R. Gilgo
Presented by GM P. Kampa
4. **APPROVAL OF CONSENT AGENDA: The following items may all be approved in one motion or considered separately as determined appropriate by the President**
 - a. Read and file the July 2016 Treasurer's Report
 - b. Approval of the Minutes of the Regular Board Meeting July 18, 2016 and Special Board Meeting July 18, 2016
 - c. Adoption of a Resolution approving a Revised District Conflict of Interest Code 2016 Local Agency Biennial Notice Verifying Biennial Review of the District's Conflict of Interest Code and Authorizing the Filing of the 2016 Local Agency Biennial Notice with the Mariposa County Clerk-Recorder.

Motion: To approve items a, b, and c on the consent calendar

Votes: Carried 5-0

First: Hankemeier Second: Warren

Ayes: Hankemeier, Warren, Sult, Johnson, and Ross

Nays: None

- d. Review and approval of Board Members attending the CSDA Annual Conference and Exhibitor Showcase

Consensus of the board to not send any director to the CSDA conference

5. DISCUSSION AND ACTION ITEMS

- a. Review and Approval of a Capital Improvement Plan (CIP) for Replacement and Upgrade of District Equipment and Infrastructure

Motion: To approve the recommended motion to approve the capital improvement plan for replacement and upgrade of district equipment and infrastructure

Votes: Carried 5-0

First: Johnson Second: Sult

Ayes: Johnson, Sult, Hankemeier, Warren, and Ross

Nays: None

- b. Review and Discussion Regarding Implementation of a Maintenance Program and Standards for District Infrastructure

Information item – No action taken

- c. Review and Approval of a Board Committee Work plan that outlines the Major Issues to be Reviewed by Committees and a Tentative Schedule of the Work

Motion: To approve the recommended motion to approve the board committee work plan that outlines the major issues to be reviewed by committees and a tentative schedule of the work

Votes: Carried 5-0

First: Hankemeier Second: Sult

Ayes: Hankemeier, Sult, Johnson, Warren, and Ross

Nays: None

- d. Review and Approval of a Communication Plan for the District

Motion: To approve the recommended motion to approve the communication plan for the District

Votes: Carried 5-0

First: Hankemeier Second: Johnson

Ayes: Hankemeier, Johnson, Sult, Warren, and Ross

Nays: None

6. DIRECTORS COMMENTS:

Director Ross – Commented on his property being located on the MID Outside Place of Use. Please see attached summary of comments written by Director Ross.

Director Hankemeier – Commented that a couple of people had high usage on the MID Outside Place of Use and wanted to know more about them. He also stated that items often get started and when a new board or manager “comes on” and they do not get completed. He wants to make sure that does not happen. He hopes we start working on capital improvements.

Director Sult – Commented that we would like to move forward on hiring a third party to evaluate the post-retirement medical benefits. He stated it was a “soft cost with a big expense.”

7. ADJOURNMENT: 3:26 p.m.

Respectfully submitted by,

S. Marchesiello
Board Secretary

Lake Don Pedro Community Services District

Regular Meeting of September 19th, 2016

AGENDA SUPPORTING DATA

5. DISCUSSION AND ACTION ITEMS

- a. Adopt Resolution Approving a New District Policy on Merit Salary Increases

Recommended Motion

Staff recommends the following motion:

I move to adopt the resolution approving the policy on Merit Salary Increases.

Background

As directed by the board staff has prepared a draft policy addressing the award of merit salary increases. The draft policy language and resolution is attached. The attached policy language was taken from a prior version of the district personnel policy manual. The changes are shown by underlines and strikethrough in the policy language.

RESOLUTION NO. 2016-__

**A RESOLUTION OF THE BOARD OF DIRECTORS
OF THE LAKE DON PEDRO COMMUNITY SERVICES DISTRICT APPROVING A
POLICY ON MERIT SALARY INCREASES**

The Board of Directors of the Lake Don Pedro Community Services District does hereby find and declare as follows:

WHEREAS, the Lake Don Pedro Community Services District (“District”) is a California community services district formed and existing under the provisions of the California Community Services District Law, codified at Government Code §§ 61000-61144, and all acts and laws amendatory thereof or supplementary thereto, and possessing all the powers thereof; and

WHEREAS, the District Board of Directors adopts policies to guide the actions of management and the District in the conduct of the day to day operations of District management and administration; and

WHEREAS, the Board has determined that certain policies are in need of update and amendment to ensure the efficient provision of services and effective management of District affairs; and

WHEREAS, draft policy language has been prepared and is attached hereto as Exhibit A for consideration and adoption.

NOW THEREFORE BE IT RESOLVED by the Board of Directors of the Lake Don Pedro Community Services District that the General Manager is hereby authorized and directed to update the District personnel policies with a certified copy of the approved policy regarding merit salary increases.

WHEREFORE, this Resolution is passed and adopted by the Board of Directors of the Lake Don Pedro Community Services District on September 19, 2016, by the following vote:

AYES:

NOES:

ABSENT:

ABSTAIN:

Danny Johnson, President, Board of Directors

ATTEST:

Syndie Marchesiello, Secretary

CERTIFICATE OF SECRETARY

STATE OF CALIFORNIA)

COUNTY OF MARIPOSA)

I, Syndie Marchesiello, the duly appointed and Secretary of the Board of Directors of the Lake Don Pedro Community Services District, do hereby declare that the foregoing Resolution was duly passed and adopted at a Special Meeting of the Board of Directors of the Lake Don Pedro Community Services District, duly called and held at _____, La Grange, CA 95239, on September 19, 2016.

DATED: September 19, 2016.

Syndie Marchesiello, Secretary

POLICY TITLE: Salary Schedule and Merit Salary Increases

POLICY NUMBER: 2145 (number subject to change)

ADOPTED:

Each job classification has a specific salary range, which is determined ~~by you~~ based on the position job description, duties, skill and level of responsibility. Salary ranges and the overall salary schedule are considered by the Board annually as part of the budget process.

Typically, newly hired employees will start at the bottom of the salary range for the classification in which they are hired. In development of the optimal workforce, the General Manager is delegated the authority to offer employment at up to the "B" salary range without prior Board approval and with documented rationale regarding the qualifications of the individual being higher than that expected for an entry level salary.

Annual performance evaluations that include specific, measurable goals and objectives shall be completed for all employees. The performance evaluation and achievements of the employee shall serve as the basis for consideration of any salary advancement, which must be recommended by the reviewing supervisor and approved by the General Manager. To be eligible for any increase, it must fall within the appropriate salary range for your job classification. Your performance reviews serve as the basis for your merit increase, if any, and only if you have not reached the "top" of your range. Performance evaluations will continue annually once an employee reaches the top, or last step of the salary scale, but there will be no additional merit salary increases available past the top of the salary range.

Lake Don Pedro Community Services District

Regular Meeting of September 19, 2016

AGENDA SUPPORTING DATA

5. DISCUSSION AND ACTION ITEMS

- b. Review and Discussion Regarding Implementation of a Maintenance Program and Standards for District Infrastructure

Recommended Motion

For discussion, information and Board direction only, no specific approval action is required.

Background

The highest priority of the Board of Directors in its 2016 Strategic Plan is the development and implementation of a formal maintenance program. Like maintenance on a vehicle, a planned program of infrastructure maintenance will maximize the useful life of the District's most expensive asset; its infrastructure.

Due to the hilly topography, the Lake Don Pedro CSD water system is comprised of many pumps to push water to the top of hills, and control valves to relieve increasing water pressure as the water heads down the other side of the hill. The system has hundreds of fire hydrants and many hundreds of large valves buried four feet in the ground on the water mains and every fire hydrant. The water treatment plant has basins, control valves, electrical controls, water pump, chemical pumps, water quality monitoring equipment and much more, all requiring varying levels of daily, weekly, monthly and annual attention, materials and staff effort.

Many small water systems operate on a reactive basis when it comes to maintenance, fixing infrastructure when it malfunctions or breaks. This method of operation is much costlier in the long run, and makes the reliability of the system questionable and breakdowns unpredictable. Every piece of the infrastructure has a recommended maintenance schedule to extend the equipment's life to an industry standard. For example, historically water tanks were thought to have a 50-year lifespan before replacement would be needed. Now, due to much improved maintenance and inspection technologies, improved construction and maintenance standards, and excellent new products such as tank coatings and cathodic protection, tanks can last indefinitely.

Much of our infrastructure is approaching its useful life, as shown by the increased incidence of failure, wear and age or 50 years. In the 1990's a full program of system maintenance was completed by operations staff. Time was available to perform the maintenance as much of the infrastructure was still in excellent condition, requiring very few emergency responses by staff. Unfortunately, in the past 20 years the level of system troubleshooting, failures and repairs has increased causing a reduction in maintenance time available. Some maintenance is still occurring, but a coordinated system of maintenance is needed for the Board and staff to fully understand the amount of work, number of staff, hours to complete, skills, tools and training required to maintain the system to standards prepared by the American Waterworks Association (AWWA), California Department of Public Health standards, and others.

The attached 2016 Maintenance Plan outlines the maintenance required of the major system components. Individual equipment maintenance specifications are to be kept in the maintenance file, and will be loaded in the new asset management program for reference on the jobsite. The asset management program will also produce schedules, work forms, document maintenance and produce reports detailing the status of the maintenance program in real time. The purpose of this agenda item is to familiarize the Board with the maintenance program and to answer related questions.

In addition to this Plan, the District will need to develop and adopt standard specifications and details, which are typically prepared by the District Engineer and/or professional engineering consultants, that contain the most current industry standards for n construction. These standards will be used any time a construction or replacement project is planned. The standards help make sure that equipment is state of the art and contains current technology, and that replacement parts and methods are consistent throughout the system.

Lake Don Pedro Community Services District

Regular Meeting of September 19th, 2016

AGENDA SUPPORTING DATA

5. DISCUSSION AND ACTION ITEMS

- c. Status Update Report on the Implementation of the Intake Booster Pump Installation and Approval of Addition of an Intake Surge Tank Bypass Pipeline Connection.

Recommended Motion

Staff recommends the following motion:

I move to approve the addition of an intake surge tank bypass pipeline connection.

Background

The Board in 2015 approved the purchase and installation of a booster pump for the Intake emergency pumping system. The pump has been purchased and engineering design completed for its installation. At the same time, the District engineer has evaluated the operation of the emergency float barge system over the range of lake elevations operated this year, and has determined that at higher lake elevations, the existing pumps are operating outside of their design curve which can be damaging to the pump and waste electricity.

Binkley's evaluation has determined that the float pumps can be operated without the use of the fixed booster pumps, connected directly from the float pump piping to the fixed booster effluent piping. The installation of a bypass pipe and control valves on the intake site can facilitate a savings in electricity and extend the life of the float pumps. Binkley is currently completing the design of the bypass system, which should be completed within two months.

Staff seeks approval from the Board to add construction of the Intake Bypass pipe to the bid documents for the Intake Booster Pump Installation Project. With Board approval, staff will submit the project for bid in October and award a contract in December for construction during low demand winter months. The cost estimate for the bypass should be available soon, and the 2016/17 capital improvement budget will be modified to allow this work to be completed this year within the total budget.

Lake Don Pedro Community Services District

Regular Meeting of September 19th, 2016

AGENDA SUPPORTING DATA

5. DISCUSSION AND ACTION ITEMS

- e. Status Update Report on the Implementation of the Water Service Line Replacement Project

Recommended Motion

For information only, no action required.

Background

The Water Service Line Replacement Project was approved by the Board in 2015, and partially funded by a DWR grant in 2016. We are preparing plans and specifications for project bidding, and hope to be prepared to start construction this winter. The purpose of this agenda item is to discuss the bidding and construction process.

Lake Don Pedro Community Services District

Regular Meeting of September 19th, 2016

AGENDA SUPPORTING DATA

5. DISCUSSION AND ACTION ITEMS

- e. Review a report of the Emergency Groundwater Well Project Budget to Actual Expenses and Consideration of Approval of a Related 2016-17 Budget Amendment

Recommended Motion

Staff recommends the following motion:

I move to direct staff to prepare a 2016/17 fiscal year budget amendment based on the final project costs incurred this fiscal year.

Background

The 2016/17 budget was prepared assuming the emergency groundwater well project would be completely finished and paid for before the start of the fiscal year. However, delays in gate installation decisions and contracts as well as delays in certain electronic and control components have caused the project to extend into this fiscal year. Although it is known that we will now have unbudgeted expenditures this year for the project and staff is authorized to complete the work, it is proper for the Board to consider a budget amendment to document the authorized expenditures in this fiscal year. We propose to have the budget amendment prepared for Board consideration in November or December, when all project expenses are closed out.

Attached is a project budget to actual sheet showing the current status of expenditures. Staff will review this budget sheet in the meeting.

Lake Don Pedro Community Services District
Budget vs Actual Expenditures
 September 2, 2016

Legend:
 Actual expenditures at 85% of budget
 Actual expenditures at budget limit
 Actual expenditures over budget

Well 2: Phase 1 - Planning/Engineering/Environmental

Task No.:	Task Description:	Cost:	DERP Budget:	DERP Actual:	SWRCB Budget:	SWRCB Actual:	USDA Budget:	USDA Actual:	*SRF inactive		*SDWBL Initially named DWR Prop 81 or Bond Law		District Budget:	District Actual:	Completion Date Budget:	Completion Date Actual:
									SRF Budget:	SRF Actual:	SDWBL Bond Law Actual:	SDWBL Bond Law Actual:				
1	Project Evaluations and Pre-Design Engineering	\$ 29,706.13	\$ -	\$ -	\$ 29,706.13	\$ 29,706.13	\$ -	\$ -	\$ -	\$ -	\$ -	\$ -	\$ -	\$ -	3/30/2015	3/30/2015
2	Plans, Specifications, and Estimates (PS&E)	\$ 40,000.00	\$ -	\$ -	\$ 30,000.00	\$ 30,000.00	\$ -	\$ -	\$ -	\$ -	\$ 10,000.00	\$ 10,000.00	\$ -	\$ -	8/15/2015	8/15/2015
3	Environmental Documents	\$ -	\$ -	\$ -	\$ -	\$ -	\$ -	\$ -	\$ -	\$ -	\$ -	\$ -	\$ -	\$ -	6/30/2015	6/30/2015
4	Right-of-Way (ROW) Acquisition	\$ 5,040.21	\$ -	\$ -	\$ 5,040.21	\$ 5,040.21	\$ -	\$ -	\$ -	\$ -	\$ -	\$ -	\$ -	\$ -	8/15/2015	8/15/2015
5	Permitting	\$ 333.00	\$ -	\$ -	\$ 333.00	\$ 333.00	\$ -	\$ -	\$ -	\$ -	\$ -	\$ -	\$ -	\$ -	8/15/2015	8/15/2015
6	Project Management	\$ 44,920.66	\$ -	\$ -	\$ 24,920.66	\$ 22,766.25	\$ -	\$ -	\$ -	\$ -	\$ 20,000.00	\$ 14,488.33	\$ -	\$ -	10/15/2015	10/15/2015
Total:		\$ 120,000.00	\$ -	\$ -	\$ 90,000.00	\$ 87,845.59	\$ -	\$ -	\$ -	\$ -	\$ 30,000.00	\$ 24,488.33	\$ -	\$ -	\$ 120,000.00	\$ 112,333.92

Well 2: Phase 2 - Construction

Task No.:	Task Description:	Cost:	DERP Budget:	DERP Actual:	SWRCB Budget:	SWRCB Actual:	USDA Budget:	USDA Actual:	*SRF inactive		*SDWBL Initially named DWR Prop 81 or Bond Law		District Budget:	District Actual:	Completion Date Budget:	Completion Date Actual:
									SRF Budget:	SRF Actual:	SDWBL Bond Law Actual:	SDWBL Bond Law Actual:				
1	Test Hole Drilling, Sampling, Logging, Testing (Assume 8 Test Holes)	\$ 88,000.00	\$ 83,000.00	\$ 83,000.00	\$ -	\$ -	\$ -	\$ -	\$ -	\$ -	\$ -	\$ -	\$ 5,000.00	\$ 5,000.00	3/30/2015	3/30/2015
2	Well Drilling, Install Casing and Screening, Development, and Testing	\$ 50,000.00	\$ 45,000.00	\$ 45,000.00	\$ -	\$ -	\$ -	\$ -	\$ -	\$ -	\$ -	\$ -	\$ 5,000.00	\$ 5,000.00	7/30/2015	7/30/2015
3	Well Equipping, Mechanical, Electrical, and Controls	\$ 60,000.00	\$ 60,000.00	\$ 60,000.00	\$ -	\$ -	\$ -	\$ -	\$ -	\$ -	\$ -	\$ -	\$ -	\$ -	9/15/2015	9/15/2015
4	Site Improvements and Fencing	\$ 10,000.00	\$ 10,000.00	\$ 10,000.00	\$ -	\$ -	\$ -	\$ -	\$ -	\$ -	\$ -	\$ -	\$ -	\$ -	9/15/2015	9/15/2015
5	Power Source Improvements	\$ 25,000.00	\$ 2,000.00	\$ 2,000.00	\$ 23,000.00	\$ 23,000.00	\$ -	\$ -	\$ -	\$ -	\$ -	\$ -	\$ -	\$ -	9/15/2015	9/15/2015
6	Connection to Raw Water System, Pipe, Valving, Surface Restoration	\$ 15,000.00	\$ -	\$ -	\$ 15,000.00	\$ 15,000.00	\$ -	\$ -	\$ -	\$ -	\$ -	\$ -	\$ -	\$ -	7/15/2015	7/15/2015
	Contingency (12%)	\$ 79,760.00	\$ -	\$ -	\$ 29,760.00	\$ 25,704.40	\$ -	\$ -	\$ -	\$ -	\$ 50,000.00	\$ 16,586.55	\$ -	\$ -	9/15/2015	9/15/2015
Total:		\$ 327,760.00	\$ 200,000.00	\$ 200,000.00	\$ 67,760.00	\$ 63,704.40	\$ -	\$ -	\$ -	\$ -	\$ 50,000.00	\$ 16,586.55	\$ 10,000.00	\$ 10,000.00	\$ 327,760.00	\$ 290,290.95

Well 2: Phase 3 - Construction Management/Inspection/Project Closeout

Task No.:	Task Description:	Cost:	DERP Budget:	DERP Actual:	SWRCB Budget:	SWRCB Actual:	USDA Budget:	USDA Actual:	*SRF inactive		*SDWBL Initially named DWR Prop 81 or Bond Law		District Budget:	District Actual:	Completion Date Budget:	Completion Date Actual:
									SRF Budget:	SRF Actual:	SDWBL Bond Law Actual:	SDWBL Bond Law Actual:				
1	Resident Engineering	\$ 12,840.83	\$ -	\$ -	\$ 12,840.83	\$ 10,000.00	\$ -	\$ -	\$ -	\$ -	\$ -	\$ -	\$ -	\$ -	9/15/2015	9/15/2015
2	Construction Surveying	\$ 899.17	\$ -	\$ -	\$ 899.17	\$ 899.17	\$ -	\$ -	\$ -	\$ -	\$ -	\$ -	\$ -	\$ -	9/15/2015	9/15/2015
3	Inspection	\$ 10,000.00	\$ -	\$ -	\$ 10,000.00	\$ 10,000.00	\$ -	\$ -	\$ -	\$ -	\$ -	\$ -	\$ -	\$ -	9/15/2015	9/15/2015
4	Project Closeout	\$ 3,760.00	\$ -	\$ -	\$ -	\$ -	\$ -	\$ -	\$ -	\$ -	\$ 2,500.00	\$ -	\$ 1,260.00	\$ -	10/15/2015	10/15/2015
Total:		\$ 27,500.00	\$ -	\$ -	\$ 23,740.00	\$ 20,899.17	\$ -	\$ -	\$ -	\$ -	\$ 2,500.00	\$ -	\$ 1,260.00	\$ -	\$ 27,500.00	\$ 20,899.17
Well 2 Total:		\$ 475,260.00	\$ 200,000.00	\$ 200,000.00	\$ 181,500.00	\$ 172,449.16	\$ -	\$ -	\$ -	\$ -	\$ 82,500.00	\$ 41,074.88	\$ 11,260.00	\$ 10,000.00	\$ 475,260.00	\$ 423,524.04

Medina Well: Phase 1 - Planning/Engineering/Environmental

Task No.:	Task Description:	Cost:	DERP Budget:	DERP Actual:	SWRCB Budget:	SWRCB Actual:	USDA Budget:	USDA Actual:	SRF Budget:	SRF Actual:	SDWBL Bond Law Budget:	SDWBL Bond Law Actual:	District Budget:	District Actual:	Completion Date Budget:	Completion Date Actual:
1	Project Evaluations and Pre-Design Engineering	\$ 10,000.00	\$ -	\$ -	\$ -	\$ -	\$ -	\$ -	\$ -	\$ -	\$ 10,000.00	\$ 6,384.80	\$ -	\$ -	5/15/2015	5/15/2015
2	Plans, Specifications, and Estimates (PS&E)	\$ 30,000.00	\$ -	\$ -	\$ -	\$ -	\$ -	\$ -	\$ -	\$ -	\$ 29,175.00	\$ 29,175.00	\$ 825.00	\$ 825.00	8/30/2015	8/30/2015
3	Environmental Documents	\$ 3,500.00	\$ -	\$ -	\$ -	\$ -	\$ -	\$ -	\$ -	\$ -	\$ -	\$ -	\$ 3,500.00	\$ -	6/30/2015	6/30/2015
4	Right-of-Way (ROW) Acquisition (Property Purchase + Pipeline Easement)	\$ 262,350.00	\$ -	\$ -	\$ -	\$ -	\$ -	\$ -	\$ -	\$ -	\$ -	\$ -	\$ 262,350.00	\$ 274,498.19	8/30/2015	8/30/2015
5	Permitting	\$ 1,500.00	\$ -	\$ -	\$ -	\$ -	\$ -	\$ -	\$ -	\$ -	\$ -	\$ -	\$ 1,500.00	\$ 333.00	5/30/2015	5/30/2015
6	Project Management	\$ 30,000.00	\$ -	\$ -	\$ -	\$ -	\$ -	\$ -	\$ -	\$ -	\$ 20,000.00	\$ 18,835.67	\$ 10,000.00	\$ 6,315.84	11/15/2015	11/15/2015
Total:		\$ 337,350.00	\$ -	\$ -	\$ -	\$ -	\$ -	\$ -	\$ -	\$ -	\$ 59,175.00	\$ 54,395.47	\$ 278,175.00	\$ 281,972.03	\$ 337,350.00	\$ 336,367.50

Medina Well: Phase 2 - Construction

Task No.:	Task Description:	Cost:	DERP Budget:	DERP Actual:	SWRCB Budget:	SWRCB Actual:	USDA Budget:	USDA Actual:	SRF Budget:	SRF Actual:	SDWBL Bond Law Budget:	SDWBL Bond Law Actual:	District Budget:	District Actual:	Completion Date Budget:	Completion Date Actual:
1	Existing Well, Sampling, Logging, Testing	\$ -	\$ -	\$ -	\$ -	\$ -	\$ -	\$ -	\$ -	\$ -	\$ -	\$ -	\$ -	\$ -	5/15/2015	5/15/2015
2	Install Temporary Piping to Existing WTP, Transducers at Wells 1 and 2, Testing	\$ 45,596.36	\$ -	\$ -	\$ 45,596.36	\$ 45,596.36	\$ -	\$ -	\$ -	\$ -	\$ -	\$ -	\$ -	\$ -	6/30/2015	6/30/2015
3	Well Equipping, Mechanical, Electrical, and Controls	\$ 56,645.93	\$ -	\$ -	\$ 56,645.93	\$ 56,645.93	\$ -	\$ -	\$ -	\$ -	\$ -	\$ -	\$ -	\$ -	9/15/2015	9/15/2015
4	Site Improvements and Fencing	\$ 10,000.00	\$ -	\$ -	\$ 10,000.00	\$ 10,000.00	\$ -	\$ -	\$ -	\$ -	\$ -	\$ -	\$ -	\$ -	10/15/2015	10/15/2015
5	Power Source Improvements	\$ 25,000.00	\$ -	\$ -	\$ 25,000.00	\$ 25,000.00	\$ -	\$ -	\$ -	\$ -	\$ -	\$ -	\$ -	\$ -	10/15/2015	10/15/2015
6	Connection to Raw Water System, Pipe, Valving, Surface Restoration	\$ 75,000.00	\$ -	\$ -	\$ 75,000.00	\$ 75,000.00	\$ -	\$ -	\$ -	\$ -	\$ -	\$ -	\$ -	\$ -	10/15/2015	10/15/2015
	Contingency (12%)	\$ 75,357.71	\$ -	\$ -	\$ 45,357.71	\$ 31,074.95	\$ -	\$ -	\$ -	\$ -	\$ 30,000.00	\$ -	\$ -	\$ -	10/15/2015	10/15/2015
Total:		\$ 287,600.00	\$ -	\$ -	\$ 257,600.00	\$ 243,317.24	\$ -	\$ -	\$ -	\$ -	\$ 30,000.00	\$ -	\$ -	\$ -	\$ 287,600.00	\$ 243,317.24

Medina Well: Phase 3 - Construction Management/Inspection/Project Closeout

Task No.:	Task Description:	Cost:	DERP Budget:	DERP Actual:	SWRCB Budget:	SWRCB Actual:	USDA Budget:	USDA Actual:	SRF Budget:	SRF Actual:	SDWBL Bond Law Budget:	SDWBL Bond Law Actual:	District Budget:	District Actual:	Completion Date Budget:	Completion Date Actual:
1	Resident Engineering	\$ 10,000.00	\$ -	\$ -	\$ -	\$ -	\$ -	\$ -	\$ -	\$ -	\$ 10,000.00	\$ 10,000.00	\$ -	\$ -	10/15/2015	10/15/2015
2	Construction Surveying	\$ 2,500.00	\$ -	\$ -	\$ -	\$ -	\$ -	\$ -	\$ -	\$ -	\$ 2,500.00	\$ 738.00	\$ -	\$ -	10/15/2015	10/15/2015
3	Inspection	\$ 10,000.00	\$ -	\$ -	\$ -	\$ -	\$ -	\$ -	\$ -	\$ -	\$ 10,000.00	\$ 10,000.00	\$ -	\$ -	10/15/2015	10/15/2015
4	Project Closeout	\$ 5,000.00	\$ -	\$ -	\$ -	\$ -	\$ -	\$ -	\$ -	\$ -	\$ 5,000.00	\$ -	\$ -	\$ -	11/15/2015	11/15/2015
Total:		\$ 27,500.00	\$ -	\$ -	\$ -	\$ -	\$ -	\$ -	\$ -	\$ -	\$ 27,500.00	\$ 20,738.00	\$ -	\$ -	\$ 27,500.00	\$ 20,738.00

Medina Well Total:	\$ 652,450.00	\$ -	\$ -	\$ 257,600.00	\$ 243,317.24	\$ -	\$ -	\$ -	\$ -	\$ -	\$ 116,675.00	\$ 75,133.47	\$ 278,175.00	\$ 281,972.03	\$ 652,450.00	\$ 600,422.74
Well 2 and Medina Total	\$ 1,127,710.00	\$ 200,000.00	\$ 200,000.00	\$ 439,100.00	\$ 415,766.40	\$ -	\$ -	\$ -	\$ -	\$ -	\$ 199,175.00	\$ 116,208.35	\$ 289,435.00	\$ 291,972.03	\$ 1,127,710.00	\$ 1,023,946.78

Wells 3 & 4: Phase 1 - Planning/Engineering/Environmental

Task No.:	Task Description:	Cost:	DERP Budget:	DERP Actual:	SWRCB Budget:	SWRCB Actual:	USDA Budget:	USDA Actual:	SRF Budget:	SRF Actual:	SDWBL Bond Law Budget:	SDWBL Bond Law Actual:	District Budget:	District Actual:	Completion Date Budget:	Completion Date Actual:
1	Project Evaluations and Pre-Design Engineering	\$ 30,000.00	\$ -	\$ -	\$ -	\$ -	\$ 29,825.00	\$ -	\$ -	\$ -	\$ 175.00	\$ 175.00	\$ -	\$ -	7/30/2015	7/30/2015
2	Plans, Specifications, and Estimates (PS&E)	\$ 10,000.00	\$ -	\$ -	\$ -	\$ -	\$ 9,350.00	\$ 9,350.00	\$ -	\$ -	\$ 650.00	\$ 650.00	\$ -	\$ -	7/30/2015	7/30/2015
3	Environmental Documents	\$ 20,000.00	\$ -	\$ -	\$ -	\$ -	\$ 18,000.00	\$ -	\$ -	\$ -	\$ 2,000.00	\$ 1,788.80	\$ -	\$ -	7/15/2015	7/15/2015
4	Right-of-Way (ROW) Acquisition	\$ -	\$ -	\$ -	\$ -	\$ -	\$ -	\$ -	\$ -	\$ -	\$ -	\$ -	\$ -	\$ -		
5	Permitting	\$ 5,000.00	\$ -	\$ -	\$ -	\$ -	\$ 5,000.00	\$ -	\$ -	\$ -	\$ -	\$ -	\$ -	\$ -	7/15/2015	7/15/2015
6	Project Management	\$ 15,000.00	\$ -	\$ -	\$ -	\$ -	\$ -	\$ -	\$ -	\$ -	\$ 15,000.00	\$ 14,901.67	\$ -	\$ -	8/30/2015	8/30/2015
Total:		\$ 80,000.00	\$ -	\$ -	\$ -	\$ -	\$ 62,175.00	\$ 9,350.00	\$ -	\$ -	\$ 17,825.00	\$ 17,515.47	\$ -	\$ -	\$ 80,000.00	\$ 26,865.47

Wells 3 & 4: Phase 2 - Construction

Task No.:	Task Description:	Cost:	DERP Budget:	DERP Actual:	SWRCB Budget:	SWRCB Actual:	USDA Budget:	USDA Actual:	SRF Budget:	SRF Actual:	SDWBL Bond Law Budget:	SDWBL Bond Law Actual:	District Budget:	District Actual:	Completion Date Budget:	Completion Date Actual:
1	Test Hole Drilling, Sampling, Logging, Testing (Assume 2 Test Holes)	\$ 22,000.00	\$ -	\$ -	\$ -	\$ -	\$ 22,000.00	\$ -	\$ -	\$ -	\$ -	\$ -	\$ -	\$ -	3/30/2015	3/30/2015
2	Well Drilling, Install Casing and Screening, Development, and Testing	\$ 100,000.00	\$ -	\$ -	\$ -	\$ -	\$ -	\$ -	\$ -	\$ -	\$ 100,000.00	\$ 96,104.51	\$ -	\$ -	7/30/2015	7/30/2015
3	Well Equipping, Mechanical, Electrical, and Controls	\$ -	\$ -	\$ -	\$ -	\$ -	\$ -	\$ -	\$ -	\$ -	\$ -	\$ -	\$ -	\$ -		
4	Site Improvements and Fencing	\$ -	\$ -	\$ -	\$ -	\$ -	\$ -	\$ -	\$ -	\$ -	\$ -	\$ -	\$ -	\$ -		
5	Power Source Improvements	\$ -	\$ -	\$ -	\$ -	\$ -	\$ -	\$ -	\$ -	\$ -	\$ -	\$ -	\$ -	\$ -		
6	Connection to Water System, Pipe, Valving, Surface Restoration	\$ -	\$ -	\$ -	\$ -	\$ -	\$ -	\$ -	\$ -	\$ -	\$ -	\$ -	\$ -	\$ -		
7	Portable Water Treatment Plant	\$ -	\$ -	\$ -	\$ -	\$ -	\$ -	\$ -	\$ -	\$ -	\$ -	\$ -	\$ -	\$ -		
	Contingency (12%)	\$ -	\$ -	\$ -	\$ -	\$ -	\$ -	\$ -	\$ -	\$ -	\$ -	\$ -	\$ -	\$ -		
Total:		\$ 122,000.00	\$ -	\$ -	\$ -	\$ -	\$ 22,000.00	\$ -	\$ -	\$ -	\$ 100,000.00	\$ 96,104.51	\$ -	\$ -	\$ 122,000.00	\$ 96,104.51

Wells 3 & 4: Phase 3 - Construction Management/Inspection/Project Closeout

Task No.:	Task Description:	Cost:	DERP Budget:	DERP Actual:	SWRCB Budget:	SWRCB Actual:	USDA Budget:	USDA Actual:	SRF Budget:	SRF Actual:	SDWBL Bond Law Budget:	SDWBL Bond Law Actual:	District Budget:	District Actual:	Completion Date Budget:	Completion Date Actual:
1	Resident Engineering	\$ 10,000.00	\$ -	\$ -	\$ -	\$ -	\$ -	\$ -	\$ -	\$ -	\$ 10,000.00	\$ 10,000.00	\$ -	\$ -	7/30/2015	7/30/2015
2	Construction Surveying	\$ -	\$ -	\$ -	\$ -	\$ -	\$ -	\$ -	\$ -	\$ -	\$ -	\$ -	\$ -	\$ -		
3	Inspection	\$ -	\$ -	\$ -	\$ -	\$ -	\$ -	\$ -	\$ -	\$ -	\$ -	\$ -	\$ -	\$ -		
4	Project Closeout	\$ -	\$ -	\$ -	\$ -	\$ -	\$ -	\$ -	\$ -	\$ -	\$ -	\$ -	\$ -	\$ -		
Total:		\$ 10,000.00	\$ -	\$ -	\$ -	\$ -	\$ -	\$ -	\$ -	\$ -	\$ 10,000.00	\$ 10,000.00	\$ -	\$ -	\$ 10,000.00	\$ 10,000.00
Well 3 & 4 Total:		\$ 212,000.00	\$ -	\$ -	\$ -	\$ -	\$ 84,175.00	\$ 9,350.00	\$ -	\$ -	\$ 127,825.00	\$ 123,619.98	\$ -	\$ -	\$ 212,000.00	\$ 132,969.98

Well 5 (Medina 2): Phase 1 - Planning/Engineering/Environmental

Task No.:	Task Description:	Cost:	DERP Budget:	DERP Actual:	SWRCB Budget:	SWRCB Actual:	USDA Budget:	USDA Actual:	SRF Budget:	SRF Actual:	SDWBL Bond Law Budget:	SDWBL Bond Law Actual:	District Budget:	District Actual:	Completion Date Budget:	Completion Date Actual:
1	Project Evaluations and Pre-Design Engineering	\$ 30,000.00	\$ -	\$ -	\$ -	\$ -	\$ 30,000.00	\$ 770.00	\$ -	\$ -	\$ -	\$ -	\$ -	\$ -	8/30/2015	8/30/2015
2	Plans, Specifications, and Estimates (PS&E)	\$ 40,000.00	\$ -	\$ -	\$ -	\$ -	\$ 40,000.00	\$ 35,085.60	\$ -	\$ -	\$ -	\$ -	\$ -	\$ -	9/15/2015	9/15/2015
3	Environmental Documents	\$ 30,000.00	\$ -	\$ -	\$ -	\$ -	\$ 30,000.00	\$ 23,838.64	\$ -	\$ -	\$ -	\$ -	\$ -	\$ -	9/15/2015	9/15/2015
4	Right-of-Way (ROW) Acquisition	\$ 15,000.00	\$ -	\$ -	\$ -	\$ -	\$ 15,000.00	\$ -	\$ -	\$ -	\$ -	\$ -	\$ -	\$ -	9/30/2015	9/30/2015
5	Permitting	\$ 1,500.00	\$ -	\$ -	\$ -	\$ -	\$ 1,500.00	\$ 333.00	\$ -	\$ -	\$ -	\$ -	\$ -	\$ -	8/15/2015	8/15/2015
6	Project Management	\$ 30,000.00	\$ -	\$ -	\$ -	\$ -	\$ 29,000.00	\$ 25,068.58	\$ -	\$ -	\$ 1,000.00	\$ 1,000.00	\$ -	\$ -	11/15/2015	11/15/2015
Total:		\$ 146,500.00	\$ -	\$ -	\$ -	\$ -	\$ 145,500.00	\$ 85,095.82	\$ -	\$ -	\$ 1,000.00	\$ 1,000.00	\$ -	\$ -	\$ 146,500.00	\$ 86,095.82

Well 5 (Medina 2): Phase 2 - Construction

Task No.:	Task Description:	Cost:	DERP Budget:	DERP Actual:	SWRCB Budget:	SWRCB Actual:	USDA Budget:	USDA Actual:	SRF Budget:	SRF Actual:	SDWBL Bond Law Budget:	SDWBL Bond Law Actual:	District Budget:	District Actual:	Completion Date Budget:	Completion Date Actual:
1	Test Hole Drilling, Sampling, Logging, Testing	\$ 25,000.00	\$ -	\$ -	\$ -	\$ -	\$ 19,000.00	\$ 7,210.00	\$ -	\$ -	\$ 6,000.00	\$ 5,700.00	\$ -	\$ -	8/15/2015	8/15/2015
2	Well Drilling, Install Casing and Screening, Development, and Testing	\$ 75,000.00	\$ -	\$ -	\$ -	\$ -	\$ 9,000.00	\$ -	\$ -	\$ -	\$ 66,000.00	\$ 65,848.93	\$ -	\$ -	8/30/2015	8/30/2015
3	Well Equipping, Mechanical, Electrical, and Controls	\$ 75,000.00	\$ -	\$ -	\$ -	\$ -	\$ 75,000.00	\$ 49,770.26	\$ -	\$ -	\$ -	\$ -	\$ -	\$ -	9/30/2015	9/30/2015
4	Site Improvements and Fencing	\$ 50,000.00	\$ -	\$ -	\$ -	\$ -	\$ 50,000.00	\$ 8,665.00	\$ -	\$ -	\$ -	\$ -	\$ -	\$ -	10/15/2015	10/15/2015
5	Power Source Improvements	\$ 25,000.00	\$ -	\$ -	\$ -	\$ -	\$ 25,000.00	\$ 25,000.00	\$ -	\$ -	\$ -	\$ -	\$ -	\$ -	10/15/2015	10/15/2015
6	Connection to Raw Water System, Pipe, Valving, Surface Restoration	\$ 30,000.00	\$ -	\$ -	\$ -	\$ -	\$ 30,000.00	\$ 3,500.00	\$ -	\$ -	\$ -	\$ -	\$ -	\$ -	10/15/2015	10/15/2015
7	Contingency (12%)	\$ 34,825.00	\$ -	\$ -	\$ -	\$ -	\$ 34,825.00	\$ 8,647.48	\$ -	\$ -	\$ -	\$ -	\$ -	\$ -	10/15/2015	10/15/2015
Total:		\$ 314,825.00	\$ -	\$ -	\$ -	\$ -	\$ 242,825.00	\$ 102,792.74	\$ -	\$ -	\$ 72,000.00	\$ 71,548.93	\$ -	\$ -	\$ 314,825.00	\$ 174,341.67

Well 5 (Medina 2): Phase 3 - Construction Management/Inspection/Project Closeout

Task No.:	Task Description:	Cost:	DERP Budget:	DERP Actual:	SWRCB Budget:	SWRCB Actual:	USDA Budget:	USDA Actual:	SRF Budget:	SRF Actual:	SDWBL Bond Law Budget:	SDWBL Bond Law Actual:	District Budget:	District Actual:	Completion Date Budget:	Completion Date Actual:
1	Resident Engineering	\$ 10,000.00	\$ -	\$ -	\$ -	\$ -	\$ 10,000.00	\$ 10,000.00	\$ -	\$ -	\$ -	\$ -	\$ -	\$ -	10/15/2015	10/15/2015
2	Construction Surveying	\$ 2,500.00	\$ -	\$ -	\$ -	\$ -	\$ 2,500.00	\$ 738.00	\$ -	\$ -	\$ -	\$ -	\$ -	\$ -	10/15/2015	10/15/2015
3	Inspection	\$ 10,000.00	\$ -	\$ -	\$ -	\$ -	\$ 10,000.00	\$ 4,957.00	\$ -	\$ -	\$ -	\$ -	\$ -	\$ -	10/15/2015	10/15/2015
4	Project Closeout	\$ 5,000.00	\$ -	\$ -	\$ -	\$ -	\$ 5,000.00	\$ -	\$ -	\$ -	\$ -	\$ -	\$ -	\$ -	11/15/2015	11/15/2015
Total:		\$ 27,500.00	\$ -	\$ -	\$ -	\$ -	\$ 27,500.00	\$ 15,695.00	\$ -	\$ -	\$ -	\$ -	\$ -	\$ -	\$ 27,500.00	\$ 15,695.00
Well 5 Total:		\$ 488,825.00	\$ -	\$ -	\$ -	\$ -	\$ 415,825.00	\$ 203,583.56	\$ -	\$ -	\$ 73,000.00	\$ 72,548.93	\$ -	\$ -	\$ 488,825.00	\$ 276,132.49
Well 3-5 Total:		\$ 700,825.00	\$ -	\$ -	\$ -	\$ -	\$ 500,000.00	\$ 212,933.56	\$ -	\$ -	\$ 200,825.00	\$ 196,168.91	\$ -	\$ -	\$ 700,825.00	\$ 409,102.47
Budget Total:		\$ 1,828,535.00	\$ 200,000.00	\$ 200,000.00	\$ 439,100.00	\$ 415,766.40	\$ 500,000.00	\$ 212,933.56	\$ -	\$ -	\$ 400,000.00	\$ 312,377.26	\$ 289,435.00	\$ 291,972.03	\$ 1,828,535.00	\$ 1,433,049.25
Reimbursable Total:		\$ 1,539,100.00	\$ 200,000.00	\$ 200,000.00	\$ 439,100.00	\$ 415,766.40	\$ 500,000.00	\$ 212,933.56	\$ -	\$ -	\$ 400,000.00	\$ 312,377.26	\$ -	\$ -	\$ 1,539,100.00	\$ 1,141,077.22

Lake Don Pedro Community Services District

Regular Meeting of September 19th, 2016

AGENDA SUPPORTING DATA

5. DISCUSSION AND ACTION ITEMS

- f. Status Update Report Regarding the Determination of Applicability of Retiree Medical Benefits for Certain Employees

Recommended Motion

This is an informational update only

Background

The Board directed the third party evaluation of the District records related to Board actions on retiree medical benefits. Unfortunately, this project is smaller in scope than typically undertaken by the consultants interviewed at the CSDA GM conference, and staff has determined that our legal counsel, Raymond Carlson can for a reasonable price efficiently provide the review and determination on behalf of the Board. We should have the written determination back from Raymond for next month's Board meeting. If this direction is unacceptable, if the Board has additional direction to provide, this agenda item will be the ideal time to make such recommendations.

Lake Don Pedro Community Services District

Regular Meeting of September 19th, 2016

AGENDA SUPPORTING DATA

5. DISCUSSION AND ACTION ITEMS

- h. Informational Presentation Regarding the Establishment and Location of District Boundaries, Sphere of Influence and Lake McClure Place of Use Boundaries.

Recommended Motion

This presentation is for public information only and no Board action is required. It is completely appropriate as part of this agenda discussion for the Board to direct staff to return with more information or to place additional related items on future Board agendas for action.

Background

This information is presented to inform and guide the Board in any decisions related to amendment of the district boundaries, sphere of influence, or MID's Place of Use (POU) as established by the State Water Resources Control Board. The District has the ability to effect a change and update in district boundaries and sphere of influence as it sees fit, but MID is responsible for initiating any changes to the POU through the state board processes if necessary.

The LDPCSD has two different boundaries that were set by the Mariposa County Local Agency Formation Commission, or LAFCO upon the formation of the District in 1980. The District boundaries are the limits within which the district has the exclusive authority to provide the water and wastewater services for which the district was established. The District boundaries were set based on the best available information in 1980 and have not since been amended. The district "sphere of influence" boundary is established by LAFCO as basically a planning area, outside the current district boundaries where logical additional expansion of our services may be necessary. The attached district boundary and sphere of influence map shows nearly identical boundaries, with some very small variances.

The purpose, actions and method of activities of LAFCO is prescribed in law by the Cortese-Knox-Hertzberg Local Government Reorganization Act of 2000; which added section 56000 and sequence to the California Government Code. Cortese-Knox declares that it is the policy of the state to encourage orderly growth and development which are essential to the social, fiscal, and economic well-being of the state. The Legislature recognized that the logical formation and determination of local agency (district) boundaries is an important factor in promoting orderly development and in balancing that development with sometimes competing state interests of discouraging urban sprawl, preserving open-space and prime agricultural lands, and efficiently extending government services.

Cortese-Knox requires the preparation of a municipal service review, or MSR for every district before any changes to boundaries or services can be considered by LAFCO. Also attached is an excerpt from the Mariposa County General Plan update report, where the history of the preparation of a municipal service review (MSR) for the district is discussed. The District and county were in 2008 working toward update of the district boundaries and had begun the process of preparing an MSR, the cost of which is proposed by Mariposa County to be an expense to the District. I have also

included a copy of a Mariposa County LAFCO prepared document that describes the process for preparation of an MSR.

Several items to consider in this discussion:

1. The district was formed with the requirement that the county service area responsible for wastewater services be ultimately assumed by the district. This has been contemplated every few years by the district and county
2. The District boundaries need to be updated to include the areas currently served by the district, and sphere of influence amended to include areas that will logically be served in the foreseeable future based on the general plans and approved land development projects in both counties.
3. The POU can be amended through the state board process, which will include engineering, environmental review and permitting costs to the District.

1 MARIPOSA COUNTY LOCAL AGENCY FORMATION COMMISSION

2 RESOLUTION NO. 80-2

3 RESOLUTION OF THE LOCAL AGENCY FORMATION COMMISSION
4 OF THE COUNTY OF MARIPOSA MAKING DETERMINATION ON
5 LAFC PROPOSAL APPROVING FORMATION OF THE LAKE DON
6 PEDRO COMMUNITY SERVICES DISTRICT.

7 On motion of Commissioner Dalton, duly seconded by
8 Commissioner Moffitt and carried unanimously, the Local Agency
9 Formation Commission adopts the following resolution:

10 Petition for the proposed formation of the Don Pedro
11 Community Services District in the counties of Mariposa and
12 Tuolumne was heretofore filed with the Executive Officer of the
13 Mariposa County Local Agency Formation Commission, and the Executive
14 Officer has examined said application and executed certificate in
15 accordance with law, determining and certifying that said filings
16 are sufficient; and

17 At the times and in the form and manner provided by law,
18 the Executive Officer has given notice of public hearing by this
19 Commission upon the application; and

20 The Executive Officer has reviewed available information
21 and prepared a report, including recommendations thereon, the
22 filings and report and related information having been presented
23 to and considered by this Commission; and

24 The public hearing by this Commission was held upon the
25 date and at the time and place specified in the notice of public
26 hearing and in any order or orders continuing the hearing; and

27 At the hearing, this Commission heard and received all
28 oral and written protests, all plans and proposed changes of organ-
ization and reorganization, objections and evidence which were made

1 presented, or filed, received evidence as to whether the territory
2 is inhabited or uninhabited, improved or unimproved, and all per-
3 sons present were given an opportunity to hear and be heard in
4 respect to any matter relating to the application in evidence pre-
5 sented at the hearing;

6 NOW THEREFORE, the Local Agency Formation Commission of
7 the County of Mariposa does hereby find, determine, resolve and
8 order as follows:

9 FINDINGS:

- 10 1. The territory proposed for formation of the Don Pedro
11 Community Services District is inhabited, improved and
12 situated within the boundaries of Mariposa and Tuolumne
13 Counties.
- 14 2. Notice as required by law has been made.
- 15 3. All persons requesting to be heard have been heard.
- 16 4. The area can best be served water and sewer services
17 through the formation of the Don Pedro Community Services
18 District.
- 19 5. Don Pedro l-M County Service Area Sewer Zone No. 1 is
20 located entirely within the boundaries of the proposed
21 Don Pedro Community Service District Area.

22 DETERMINATIONS:

23 Section 1. The proposal is approved subject to the terms
24 and conditions hereinafter specified:

- 25 1. The Lake Don Pedro Community Services District shall be
26 authorized to provide sewer and water services.
- 27 2. Written proof be submitted to the Board of Supervisors
28 that all property owners within the boundaries of the

1 proposed District have been notified that District
2 formation will require substantial increases in water
3 fees in addition to the setting of standby fees, fire
4 hydrant fees.

5 3. A zone of benefit shall be created within the Lake Don
6 Pedro Community Services District ("LDPCSD") with boun-
7 daries coextensive with the present boundaries of the
8 County sewer zone. The County shall transfer the assets
9 and liabilities of the sewer zone to the LDPCSD, and the
10 LDPCSD will accept same, subject to an agreement to be
11 negotiated and executed between the County Sewer Zone
12 and the LDPCSD in which the County will agree to subsidize
13 the deficits of the LDPCSD's provision of sewer service
14 within the zone of benefit, not to exceed the extent that
15 such deficits result from the loss of property tax reven-
16 ues that would have been available were this to remain a County sewer
17 zone not to exceed the current amount of revenue. Such agreement
18 would further provide that the County's obligation to subsidize the
19 providing of sewer service would be decreased pro rata by additional
20 revenues generated by connection fees and service fees of users of the
21 system. The County shall be relieved of all liability to
22 subsidize the sewer system's operations at such time as
23 the LDPCSD has either the legal ability to accept property
24 tax revenues formerly received by the County Sewer Zone
25 or the LDPCSD has the legal ability to impose sewer
26 stand-by charges.

27 4. Diligent efforts shall be made by LDPCSD to include such
28 other sewer zones of districts as may exist in Tuolumne

1 County, or elsewhere within the Community Services Dist-
2 trict in accordance with No. 2, above.

- 3 5. Subject to the following conditions, a negative declar-
4 ation be accepted and filed in accordance with the
5 California Environmental Quality Act and County policy.

6 CONDITIONS:

7 CONDITION NO. 1. The conducting agencies shall not make
8 any changes in the boundaries hereby approved nor shall
9 it impose any new conditions or modify any conditions
10 hereby imposed unless and until it receives the approval
11 of the Local Agency Formation Commission for such changes,
12 modifications, or conditions, pursuant to the procedures
13 prescribed by section 56275 of the Government Code.

14 CONDITION NO. 2. The conducting agencies shall provide
15 the Local Agency Formation Commission Executive Officer
16 with a copy of the resolution calling the hearing and a
17 copy of the resolution indicating final disposition of
18 the proposal which indicate full compliance with this
19 resolution, and shall provide copies of the documents
20 submitted to the State Board of Equalization and the
21 Secretary of State for recording.

22 CONDITION NO. 3. The boundaries have hereby approved (as
23 presented) and as approved are set forth in Exhibit "A"
24 and "B" attached hereto.

25 CONDITON NO. 4. The following distinctive short form
26 designation shall be used throughout this proceeding:
27 The Don Pedro Community Services District Formation
28 Petition.

1
2
3
4
5
6
7
8
9
10
11
12
13
14
15
16
17
18
19
20
21
22
23
24
25
26
27
28

CONDITION NO. 5. The conducting agencies for this proceeding shall be the Boards of Supervisors of Mariposa and Tuolumne Counties.

SECTION 2. The governing body of the conducting agency is directed to initiate appropriate proceedings in compliance with this resolution and state law.

SECTION 3. LAFCO Executive Officer is authorized and directed to mail certified copies of this resolution in the manner and as provided in section 56272 of the Government Code.

SECTION 4. Approval by the Local Agency Formation Commission is not to be interpreted as indicating that the Commission recommends, requires or advocates this particular proceeding; It should be construed only to mean that if the people, acting by election or through their elected representatives, as required by existing statutory provisions, wish to establish the boundaries of a political taxing agency in order to provide a necessary service, The Mariposa County Local Agency Formation Commission shall permit such actions to proceed in accordance with law. The proposal as approved by this Commission would accomplish the service in a reasonable manner with a maximum chance of success and a minimum disruption of service to the functions of other local Agencies in the area.

STATE OF CALIFORNIA]
County of Mariposa] ss.

I, Joan Lynk, Executive Officer of the Local Agency Formation Commission of Mariposa County, California, hereby certify this record to be a full, true and correct copy of the record of the action taken by said Commission, by vote of the members present,

1 as the same appears in the Official Minutes of said Commission at
2 it's meeting of January 15, 1980.

3 DATED: 2/19/80

4 JOAN LYNK, Executive Officer of
5 LOCAL AGENCY FORMATION COMMISSION

6 By: Joan J. Lynk

7
8
9
10
11
12
13
14
15
16
17
18
19
20
21
22
23
24
25
26
27
28

LAFCO RESOLUTION 80-1 EXHIBIT "B"

DESCRIPTION
SEWER ZONE NO. 1
COUNTY SERVICE AREA DON PEDRO 1M

All the certain real property situate in Sections 30, 31 and 32 Township 3 South, Range 15 East, M.D.M., County of Mariposa, State of California, described as follows:

Beginning at the one-quarter corner common to said Sections 31 and 32, said point being a point in the Southerly line of Lake Don Pedro Subdivision Unit No. 3M, as shown on the official plat thereof filed in the office of the Recorder of Mariposa County in Book 1 of Maps at Page 1693; THENCE, FROM SAID POINT OF BEGINNING along the boundary of said subdivision the following eighteen (18) courses: (1) South 89°15'10" West 1331.93 feet; (2) North 00°03'37" East 596.66 feet; (3) South 75°49'38" East 809.67 feet; (4) North 85°37'03" East 195.22 feet; (5) North 60°40'28" East 306.97 feet; (6) South 62°09'58" East 76.32 feet; (7) North 27°50'02" East 926.95 feet; (8) Northeasterly 368.29 feet along the arc of a tangent curve concave to the Northwest, having a radius of 950.00 feet and through a central angle of 22°12'43" to a point of compound curvature; (9) Northwesterly 46.67 feet along the arc of a curve concave to the Southwest, having a radius of 25.00 feet and through a central angle of 106°57'22"; (10) South 78°39'57" West 40.70 feet; (11) South 68°33'06" West 103.28 feet; (12) North 48°03'07" West 167.19 feet; (13) Westerly 33.12 feet along the arc of a tangent curve concave Southerly, having a radius of 25.00 feet and through a central angle of 75°54'00"; (14) South 56°02'13" West 134.39 feet; (15) Southwesterly 240.29 feet along the arc of a tangent curve concave to the Northwest, having a radius of 555.00 feet and through a central angle of 24°48'25"; (16) along the extension of a radial line to said curve, South 09°09'22" East 56.28 feet; (17) South 45°58'24" West 150.88 feet; and (18) North 78°17'03" West 159.99 feet to a point being in the Southerly line of Lot 1744; thence, leaving said subdivision boundary, South 37°40'42" West 623.08 feet; thence, North 56°28'48" West 151.65 feet; thence, North 06°09'02" East 135.56 feet; thence, North 44°54'27" East 167.63 feet; thence, North 64°34'07" East 136.83 feet; thence, North 02°10'27" East 148.10 feet to an angle point in the aforementioned boundary of Lake Don Pedro Subdivision Unit No. 3M, said angle point being also an angle point in the rear line of Lot 1742; thence, along the boundary of said subdivision the following ten (10) courses: (1) North 33°42'01" West 384.49 feet; (2) North 41°05'06" East 86.66 feet; (3) North 48°54'54" West 167.60 feet; (4) Northwesterly 177.18 feet along the arc of a tangent curve concave to the Northeast, having a radius of 405.00 feet and through a central angle of 25°03'58"; (5) South 74°58'06" West 321.98 feet; (6) North 19°04'16" West 545.02 feet; (7) North 61°52'49" West 875.74 feet; (8) North 01°31'25" West 300.11 feet; (9) North 87°14'31" West 368.85 feet; and (10) North 00°11'08" East 205.11 feet to the Northwest corner of Lot 1662; thence, leaving said subdivision boundary and along the Northerly line of said Lot 1662, North 86°03'40" East 421.10 feet to the Westerly

SEWER ZONE NO. 1
COUNTY SERVICE AREA DON PEDRO 1M

Page 2

line of Caracol Circle; thence, along said Westerly line the following two (2) courses: (1) from a tangent that bears North $03^{\circ}56'20''$ West, Northeasterly 417.70 feet along the arc of a curve concave to the Southeast, having a radius of 365.00 feet and through a central angle of $65^{\circ}34'08''$; and (2) South $28^{\circ}22'12''$ East 15.00 feet; thence, continuing South $28^{\circ}22'12''$ East 90.00 feet to a point in the boundary of Lot 1689; thence, along said boundary the following four (4) courses: (1) North $61^{\circ}37'48''$ East 208.20 feet; (2) Easterly 39.27 feet along the arc of a tangent curve concave Southerly, having a radius of 25.00 feet and through a central angle of $90^{\circ}00'00''$; (3) South $28^{\circ}22'12''$ East 208.09 feet; and (4) South $61^{\circ}37'48''$ West 260.00 feet to the Northeast corner of Lot 1688; thence, along the Northeasterly lines of Lots 1688 through 1679 inclusive the following two (2) courses: (1) South $17^{\circ}33'13''$ East 311.09 feet; and (2) South $55^{\circ}23'24''$ East 416.06 feet to a point in the Northwesterly line of Caracol Circle; thence, along said Northwesterly line North $34^{\circ}36'36''$ East 176.74 feet; thence, leaving said Northwesterly line, North $66^{\circ}05'20''$ East 57.45 feet to the center line intersection of Caracol Circle and Mirasol Way; thence, South $00^{\circ}55'21''$ West 180.86 feet to the most Northerly corner of Lot 1677, a point in the Westerly line of Mirasol Way; thence, along said Westerly line the following six (6) courses: (1) South $27^{\circ}16'27''$ East 107.62 feet; (2) South $19^{\circ}53'38''$ West 292.52 feet; (3) South $26^{\circ}50'23''$ East 174.52 feet; (4) South $61^{\circ}05'04''$ East 182.62 feet; (5) North $35^{\circ}36'23''$ East 15.00 feet; and (6) from a tangent that bears South $54^{\circ}23'37''$ East, Southeasterly 88.49 feet along the arc of a curve concave to the Northeast, having a radius of 305.00 feet and through a central angle of $16^{\circ}37'25''$; thence, North $56^{\circ}30'30''$ East 74.60 feet to the center line intersection of Mirasol Way and Fachada Way; thence, South $49^{\circ}39'27''$ East 87.03 feet to a point in the Southerly line of Mirasol Way; thence, along said Southerly line the following two (2) courses: (1) from a tangent that bears North $84^{\circ}28'50''$ East, Northeasterly 141.56 feet along the arc of a curve concave to the Northwest, having a radius of 305.00 feet and through a central angle of $26^{\circ}35'37''$; and (2) North $57^{\circ}53'13''$ East 197.85 feet to the most Northerly corner of Lot 1728; thence, along the Northeasterly line thereof, South $32^{\circ}06'47''$ East 197.13 feet to the most Northerly corner of Lot 1726; thence, along the Northerly line thereof, South $75^{\circ}16'31''$ East 117.11 feet to a point on the Westerly line of Rincon Court; thence, continuing South $75^{\circ}16'31''$ East 70.00 feet to the Easterly line of Rincon Court; thence, along said Easterly line the following two (2) courses: (1) South $14^{\circ}43'29''$ West 60.75 feet; and (2) from a tangent that bears South $39^{\circ}35'24''$ East, Southeasterly 52.98 feet along the arc of a curve concave to the Southwest having a radius of 60.00 feet and through a central angle of $50^{\circ}35'18''$ to the Northwest corner of Lot 1711; thence, along the Northerly line thereof, South $79^{\circ}00'06''$ East 125.01 feet to the Northeast corner thereof; thence, along the Easterly line of Lots 1711 and 1723, 280.21 feet to the Northwest corner of Lot 1718; thence, along the Northerly line of Lots 1718 through 1714 inclusive the following two (2) courses: (1) South $79^{\circ}21'40''$ East 44.38 feet; and (2) North

SEWER ZONE NO.1
COUNTY SERVICE AREA DON PEDRO 1M

Page 3

80°34'07" East 331.51 feet; to the Westerly line of Hernandez Drive; thence, along said Westerly line, South 09°25'53" East 47.16 feet; thence, North 80°34'07" East 100.00 feet to the Easterly line of Hernandez Drive; thence, along the Easterly and Northerly line of Hernandez the following five (5) courses: (1) from a tangent that bears South 09°25'53" East, Southeasterly 194.24 feet along the arc of a curve concave to the Northeast, having a radius of 180.00 feet and through a central angle of 61°49'40"; (2) North 18°44'27" East 20.00 feet; (3) from a tangent that bears South 71°15'33" East, Easterly 83.98 feet along the arc of a curve concave Northerly, having a radius of 160.00 feet and through a central angle of 30°04'30"; (4) North 78°39'57" East 51.42 feet; and (5) Northeasterly 33.60 feet along the arc of a tangent curve concave to the Northwest, having a radius of 25.00 feet and through a central angle of 77°00'00" to the Westerly line of Ranchito Drive; thence, along said Westerly line, North 01°39'57" East 216.87 feet; thence, South 88°20'03" East 130.00 feet to the Easterly line of Ranchito Drive; thence, along said Easterly line the following three (3) courses: (1) from a tangent that bears North 01°39'57" East, Northeasterly 129.70 feet along the arc of a curve concave to the Southeast, having a radius of 500.00 feet and through a central angle of 14°51'46"; (2) North 30°46'52" East 103.65 feet; and (3) North 56°02'32" East 219.37 feet to the most Northerly corner of Lot 1588; thence, along the Northeasterly line thereof, South 43°59'24" East 37.13 feet to the Northerly line of Capullo Circle; thence, along said Northerly line the following four (4) courses: (1) from a tangent that bears North 46°00'36" East, Northeasterly 40.91 feet along the arc of a curve concave to the Southeast, having a radius of 185.00 feet and through a central angle of 12°40'11"; (2) North 31°19'14" West 5.00 feet; (3) from a tangent that bears North 58°40'46" East, Northeasterly 126.80 feet along the arc of a curve concave to the Southeast, having a radius of 190.00 feet and through a central angle of 38°14'13"; and (4) South 83°05'01" East 30.20 feet; thence, South 06°54'59" West 75.00 feet to the Northeast corner of Lot 1566; thence, along the Easterly line thereof, South 10°08'47" West 84.28 feet to the most Northerly corner of Lot 1567; thence, along the Northeasterly line of Lots 1567 through 1570 inclusive, South 43°33'32" East 272.72 feet; thence, along the Northerly line of Lots 1571, 1572, 1573, and 1564, South 87°30'08" East 279.34 feet to the Westerly line of Banderilla Drive; thence, along said Westerly line, North 04°25'59" East 81.74 feet; thence, South 85°34'01" East 85.00 feet to the Northwest corner of Lot 1524; thence, along the Northerly line thereof, continuing South 85°34'01" East 192.67 feet to the most Westerly corner of Lot 1522; thence, along the Northwesterly line thereof, North 34°22'43" East 215.39 feet to the Southwesterly line of Jalisco Way; thence, along said Southwesterly line the following six (6) courses: (1) from a tangent that bears South 51°24'00" East, Southeasterly 98.88 feet along the arc of a curve concave to the Southwest, having a radius of 275.00 feet and through a central angle of 20°36'02"; (2) South 30°47'58" East 193.03 feet; (3) North 59°12'02" East 15.00 feet;

SEWER ZONE NO. 1
COUNTY SERVICE AREA DON PEDRO 1M

Page 4

(4) South $30^{\circ}47'58''$ East 512.17 feet; (5) Southeasterly 590.95 feet along the arc of a tangent curve concave to the Northeast, having a radius of 735.00 feet and through a central angle of $46^{\circ}03'58''$; and (6) South $76^{\circ}51'56''$ East 220.43 feet to the Northeast corner of Lot 1505; thence, along the Easterly line thereof, South $08^{\circ}59'52''$ West, 384.42 feet to the Northeast corner of Lot 1543; thence, along the Easterly line thereof, South $13^{\circ}08'04''$ West 365.61 feet to the Northerly line of Banderilla Drive; thence, along said Northerly line, from a tangent that bears South $81^{\circ}02'42''$ East, Easterly 173.13 feet along the arc of a curve concave Northerly, having a radius of 750.00 feet and through a central angle of $13^{\circ}13'34''$; thence, South $04^{\circ}16'16''$ East 100.00 feet to the Southerly line of Banderilla Drive; thence, along said Southerly line the following two (2) courses: (1) South $80^{\circ}09'04''$ West 193.83 feet; and (2) from a tangent that bears North $81^{\circ}45'09''$ West, Northwesterly 165.73 feet along the arc of a curve concave to the Northeast, having a radius of 890.00 feet and through a central angle of $10^{\circ}40'10''$ to the most Easterly corner Lot 1548; thence, along the Southeasterly line thereof, South $35^{\circ}16'57''$ West 326.41 feet to a point in the hereinabove mentioned boundary of Lake Don Pedro Unit No. 3M; thence, along said boundary the following sixteen (16) courses: (1) North $33^{\circ}32'19''$ West 420.45 feet; (2) North $40^{\circ}40'00''$ West 290.00 feet; (3) North $03^{\circ}33'05''$ West 222.55 feet; (4) North $48^{\circ}00'23''$ West 198.39 feet; (5) North $67^{\circ}15'36''$ West 353.42 feet; (6) North $40^{\circ}27'47''$ West 520.27 feet; (7) North $60^{\circ}47'15''$ West 400.08 feet; (8) North $82^{\circ}04'24''$ West 339.21 feet; (9) South $01^{\circ}39'57''$ West 90.89 feet; (10) Southwesterly 479.55 feet along the arc of a tangent curve concave to the Northwest, having a radius of 1050.00 feet and through a central angle of $26^{\circ}10'04''$; (11) South $27^{\circ}05'02''$ West 432.02 feet; (12) South $62^{\circ}09'58''$ East 77.72 feet; (13) South $27^{\circ}08'36''$ East 423.89 feet; (14) South $58^{\circ}54'13''$ East 685.72 feet; (15) South $02^{\circ}42'03''$ East 134.56 feet; and (16) South $89^{\circ}59'05''$ West 1158.41 feet to the point of beginning.

All Drives, Circles, Ways and Lots mentioned herein are as shown on the official plat of Lake Don Pedro Unit No. 3 filed in the office of the Recorder of Mariposa County in Book 1 of Maps, at Page 1693.

LEGAL DESCRIPTION
of Boundaries for Proposed
LAKE DON PEDRO COMMUNITY SERVICES DISTRICT

All those certain lands situated in the State of California, Counties of Tuolumne and Mariposa, being portions of Township 2 South and Township 3 South, all Range 15 East, M.D.M., the boundaries of which lands are more particularly described as follows:

Beginning in said Tuolumne County at the section corner common to Sections 19, 20, 30, and 29 T. 2S., R. 15E., M.D.M., and running thence along the line common to said Sections 20 and 29 North $86^{\circ}58'39''$ East 2590.22 feet to the $\frac{1}{4}$ corner common to said Sections 20 and 29;

thence leaving said section line and running South $00^{\circ}00'03''$ West 2772.70 feet to the center $\frac{1}{4}$ corner of said Section 29;

thence South $89^{\circ}51'26''$ East 1285.08 feet;

thence South $01^{\circ}07'35''$ East 1331.54 feet;

thence South $89^{\circ}48'07''$ East 1214.55 feet to the line common to said Tuolumne and Mariposa Counties;

thence in said Mariposa County South $89^{\circ}48'07''$ East 96.73 feet to the section line common to said Section 29 and Section 28;

thence in said Section 28 South $89^{\circ}36'57''$ East 1635.23 feet to the county line common to said Mariposa and Tuolumne Counties;

thence in said Tuolumne County the following eleven (11) courses:

- (1.) South $89^{\circ}36'57''$ East 732.48 feet;
- (2.) North $00^{\circ}40'21''$ West 1338.27 feet;
- (3.) South $89^{\circ}45'04''$ East 65.42 feet;
- (4.) North $30^{\circ}33'53''$ East 42.79 feet;
- (5.) North $27^{\circ}36'07''$ West 195.00 feet;
- (6.) North $66^{\circ}10'53''$ East 183.00 feet;
- (7.) North $89^{\circ}53'53''$ East 200.00 feet;
- (8.) South $00^{\circ}06'07''$ East 108.39 feet;
- (9.) South $89^{\circ}37'46''$ East 1289.96 feet;
- (10.) South $00^{\circ}09'25''$ East 174.10 feet;
- (11.) South $00^{\circ}58'49''$ East 1275.47 feet to said County Line;

thence along said County Line South $44^{\circ}46'13''$ West 97.65 feet;

thence leaving said county line and running in said Mariposa County South $89^{\circ}28'48''$ East 1393.26 feet to the section line common to said Section 28 and Section 27;

thence running in said Section 27 North $86^{\circ}49'33''$ East 1314.70 feet and South $00^{\circ}44'43''$ East 1382.78 feet to the section line common to said Section 27 and Section 34;

thence along last said section line North $88^{\circ}09'41''$ East 765.78 feet;

thence leaving last said section line and running in said Section 34 the following six (6) courses:

- (1.) South $37^{\circ}14'29''$ West 668.30 feet;
- (2.) Along a Curve to the right with a central angle of $46^{\circ}45'44''$ a radius of 435 feet and a length of 355.03 feet;
- (3.) South $37^{\circ}00'00''$ East 366.93 feet;
- (4.) North $64^{\circ}34'23''$ East 152.47 feet;
- (5.) North $77^{\circ}47'03''$ East 386.85 feet;
- (6.) North $61^{\circ}36'45''$ East 157.46 feet to the center section line of said Section 34;

thence along said center section line North $00^{\circ}45'52''$ West 997.23 feet to last said section line;

thence along last said section line North $82^{\circ}49'54''$ East to the section corner common to said Sections 27 and 34 and Sections 35 and 26;

thence along the section line common to said Sections 34 and 35 South $00^{\circ}20'42''$ West 5547.33 feet to the section corner common to said Sections 34 and 35 and Sections 2 and 3, T. 3S., R. 15E., M.D.M;

thence along the section line common to said Sections 3 and 34 North $89^{\circ}38'48''$ West 4568.64 feet to the northeastern line of State Highway 132;

thence along said northeastern line in said Section 34 North $56^{\circ}26'59''$ West 935.79 feet to the section line common to said Section 34 and Section 33;

thence continuing along said northeastern line in said Section 33 the following five (5) courses:

- (1.) North $56^{\circ}26'59''$ West 435.25 feet;
- (2.) North $50^{\circ}37'01''$ West 662.13 feet;
- (3.) North $65^{\circ}32'23''$ West 496.93 feet;
- (4.) North $82^{\circ}27'19''$ West 599.25 feet;
- (5.) South $76^{\circ}48'36''$ West 771.58 feet to the center section line of said Section 33;

thence leaving said northeastern line along the center section line of said Section 33 South $00^{\circ}11'37''$ West 1269.22 feet to the $\frac{1}{2}$ corner common to said Section 33 and Section 4, T. 3S., R. 15E., M.D.M.;

thence leaving last said center section line along the section line common to said Sections 33 and 4 North $89^{\circ}36'36''$ West 1347.55 feet;

thence in said T. 3S. and in said Section 4, leaving last said section line South $00^{\circ}06'51''$ West 1021.81 feet and North $89^{\circ}07'58''$ West 1348.42 feet to the section line common to said Section 4 and Section 5;

thence along last said section line into Tuolumne County South $00^{\circ}43'26''$ West 1393.90 feet to the $\frac{1}{4}$ corner common to said Sections 4 and 5;

thence along last said section line South $00^{\circ}37'57''$ West 1341.73 feet;

thence in said Section 4 leaving last said section line North $89^{\circ}57'27''$ East 987.82 feet to said county line;

thence along said county line in said Section 4 and into Section 9 the following sixteen (16) courses:

- (1.) South $36^{\circ}40'13''$ East 272.63 feet;
- (2.) South $08^{\circ}35'33''$ East 428.83 feet;
- (3.) South $16^{\circ}12'55''$ West 182.28 feet;
- (4.) South $29^{\circ}56'05''$ East 114.95 feet;
- (5.) South $44^{\circ}37'10''$ East 375.91 feet;
- (6.) South $43^{\circ}01'55''$ East 188.66 feet;
- (7.) South $14^{\circ}17'34''$ East 236.90 feet;
- (8.) South $63^{\circ}26'30''$ East 160.98 feet;
- (9.) South $36^{\circ}20'52''$ East 302.83 feet;
- (10.) South $33^{\circ}57'33''$ East 211.23 feet;
- (11.) South $16^{\circ}33'11''$ East 358.00 feet;
- (12.) South $42^{\circ}09'07''$ East 164.99 feet;
- (13.) South $21^{\circ}15'55''$ East 234.91 feet;
- (14.) South $17^{\circ}24'54''$ East 281.39 feet;
- (15.) South $34^{\circ}10'35''$ East 283.38 feet;
- (16.) South $51^{\circ}31'15''$ East 108.85 feet to the center section line of said Section 9;

thence leaving said county line and running in said Tuolumne County and in said Section 9 along last said center section line South 00°42'00" West 1609.88 feet;

thence leaving last said center section line North 59°50'56" East 1195.33 feet to said County Line;

thence along said County Line South 36°36'50" East 150.51 feet and South 16°18'40" East 302.41 feet;

thence leaving said county line in said Tuolumne County South 59°51'10" West 1339.86 feet to the centerline of Merced Falls Road;

thence along said centerline North 29°20'21" West 111.04 feet to last said center section line;

thence along last said center section line South 00°42'00" West 1516.68 feet to the $\frac{1}{4}$ corner common to said Section 9 and Section 16;

thence leaving last said center section line along the section line common to said Sections 9 and 16 North 88°21'52" East 2080.49 feet to said county line;

thence leaving last said section line along said county line the following three (3) courses:

- (1.) South 20°10'17" East 639.99 feet;
- (2.) South 60°02'59" East 278.06 feet;
- (3.) South 27°34'15" East 203.85 feet to the section line common to said Section 16 and Section 15;

thence leaving said county line and running in said Tuolumne County along last said section line South 01 54'52" West 1157.30 feet;

thence leaving last said section line in said Section 15 North 89 59;43" East 631.37 feet to said County Line;

thence along said County Line the following seven (7) courses:

- (1.) South 25°13'15" East 106.62 feet;
- (2.) South 43°07'53" East 245.70 feet;
- (3.) South 52°56'23" East 235.48 feet;
- (4.) South 18°51'15" East 215.80 feet;
- (5.) South 78°31'32" East 283.52 feet;
- (6.) South 19°10'01" East 211.62 feet;
- (7.) South 39°08'03" East 91.96 feet;

thence leaving said County Line in said Tuolumne County and into said Section 16 South 63°20'46" West 2300.62 feet to the Merced Falls Road;

thence along said Merced Falls Road in said Section 16 and in Section 15 and 22 the following fifteen (15) courses:

- (1.) South 42°31'22" East 59.00 feet;
- (2.) South 27°37'22" East 290.16 feet;
- (3.) South 33°02'22" East 166.09 feet;
- (4.) South 44°17'22" East 265.14 feet;
- (5.) South 18°41'22" East 669.36 feet;
- (6.) South 19°24'22" East 400.21 feet;
- (7.) South 06°32'22" East 285.15 feet;
- (8.) South 21°00'37" East 496.36 feet;
- (9.) South 15°42'29" East 311.35 feet;
- (10.) South 11°22'44" East 727.14 feet;
- (11.) South 17°39'42" East 886.73 feet;
- (12.) South 08°48'42" East 449.85 feet;
- (13.) South 14°12'42" East 552.59 feet;
- (14.) South 23°55'42" East 349.11 feet;
- (15.) South 10°58'38" East 149.08 feet to said county line;

thence leaving said Tuolumne County and continuing along said Merced Falls Road in said Mariposa County in said Section 22 and in Section 27 the following four (4) courses:

- (1.) South 08°36'13" East 340.90 feet;
- (2.) South 01°28'10" West 2024.59 feet;
- (3.) South 89°12'55" East 35.47 feet;
- (4.) South 00°08'05" East 1356.57 feet to the Barrett Cove Road;

thence leaving said Merced Falls Road and running along said Barrett Cove Road, South 89°34'03" East 4032.42 feet to the ¼ corner common to said Section 27 and Section 26;

thence leaving said Barrett Cove Road along the section line common to said Section 26 and 27 South 00°15'18" West 2673.31 feet to the section corner common to said Sections 26 and 27 and Sections 34 and 35;

thence along the section line common to said Sections 27 and 34 North $89^{\circ}44'26''$ West 2640.46 feet to the western side of said Merced Falls Road;

thence leaving last said section line and running along said Merced Falls Road in Section 34 the following eleven (11) courses:

- (1.) South $00^{\circ}52'50''$ East 394.46 feet;
- (2.) Along a curve to the right with a central angle of $04^{\circ}45'09''$ a radius of 2,000 feet and a length of 165.89 feet;
- (3.) South $02^{\circ}21'42''$ West 378.94 feet;
- (4.) South $04^{\circ}54'41''$ West 550.51 feet;
- (5.) Along a curve to the right with a central angle of $17^{\circ}42'10''$ a radius of 2,200 feet and a length of 679.74 feet;
- (6.) South $21^{\circ}34'29''$ West 285.00 feet;
- (7.) South $19^{\circ}04'49''$ West 315.50 feet;
- (8.) South $24^{\circ}56'58''$ West 206.25 feet;
- (9.) South $13^{\circ}56'53''$ West 157.65 feet;
- (10.) South $06^{\circ}47'58''$ East 147.88 feet;
- (11.) South $00^{\circ}38'20''$ East 782.73 feet;

thence leaving said Merced Falls Road and running in said Section 34 and into Section 33 the following six (6) courses:

- (1.) South $87^{\circ}49'06''$ West 724.79 feet;
- (2.) South $64^{\circ}22'23''$ West 764.60 feet;
- (3.) North $87^{\circ}54'44''$ West 507.61 feet;
- (4.) North $55^{\circ}30'14''$ West 2006.43 feet;
- (5.) North $00^{\circ}51'18''$ East 348.77 feet;
- (6.) North $00^{\circ}33'56''$ East 2891.23 feet to the section line common to said Section 33 and Section 28;

thence along last said section line North $88^{\circ}38'58''$ West 1340.16 feet to the $\frac{1}{4}$ corner common to said Sections 33 and 28;

thence leaving last said section line along the center section line of said Section 33 South $00^{\circ}52'46''$ West 2846.03 feet to the center $\frac{1}{4}$ corner of said Section 33;

thence along the center section line of said Section 33 North $86^{\circ}44'52''$ West 2673.59 feet to the $\frac{1}{4}$ corner common to said Section 33 and Section 32;

thence leaving said Section 33 along the center section line of said Section 32 South 89°59'05" West 5317.91 feet to the $\frac{1}{4}$ corner common to said Section 32 and Section 31;

thence leaving said Section 32 along the center section line of said Section 31 South 89°15'10" West 1331.93 feet;

thence leaving last said center section line North 00°03'36" East 1325.37 feet and South 89°05'30" West 1331.98 feet to the center section line of said Section 31;

thence along last said center section line North 00°03'36" East 1321.62 feet to the $\frac{1}{4}$ corner common to said Section 31 and Section 30;

thence leaving said Section 31 along the center section line of said Section 30 North 00°11'08" East 5355.32 feet to the $\frac{1}{4}$ corner common to said Section 30 and Section 19;

thence leaving said Section 30 along the center section line of said Section 19 North 00°26'10" East 2672.21 feet to the center $\frac{1}{4}$ corner of said Section 19;

thence along the center section line of said Section 19 North 88°23'49" East 1343.18 feet;

thence leaving last said center section line North 00°22'51" East 2661.79 feet to the section line common to said Section 19 and Section 18;

thence along last said section line South 87°21'48" West 4119.01 feet to the section corner common to Sections 18 and 19, T. 3S., R. 15E., M.D.M. and Section 13 and 24, T. 3S., R. 14E., M.D.M.;

thence leaving said Section 19 along the section line common to said Section 18 and 13 North 00°01'38" East 2608.23 feet to the $\frac{1}{4}$ corner common to said Section 18 and 13;

thence continuing along last said section line North 00°08'54" West 2298.64 feet to said County Line;

thence leaving last said section line and running in said Section 18 and along said county line the following thirtynine (39) courses;

- (1.) South 65°08'19" East 215.37 feet;
- (2.) North 78°09'43" East 225.62 feet;
- (3.) North 56°25'54" East 197.58 feet;
- (4.) North 78°45'26" East 327.99 feet;
- (5.) North 83°51'46" East 170.45 feet;
- (6.) North 59°41'17" East 274.60 feet;
- (7.) North 79°12'45" East 133.25 feet;
- (8.) South 33°11'43" East 210.41 feet;
- (9.) South 11°12'31" East 169.18 feet;
- (10.) South 51°58'13" East 219.65 feet;

- (11.) South 33°07'14" West 602.57 feet;
- (12.) South 34°48'04" East 82.19 feet;
- (13.) South 70°20'20" East 336.76 feet;
- (14.) South 26°26'15" East 159.94 feet;
- (15.) South 62°32'31" East 334.35 feet;
- (16.) South 50°15'51" East 399.54 feet;
- (17.) South 50°20'18" East 234.52 feet;
- (18.) South 07°37'29" East 272.85 feet;
- (19.) South 07°27'34" East 192.14 feet;
- (20.) South 08°22'00" West 159.33 feet;
- (21.) South 26°12'45" West 232.67 feet;
- (22.) South 15°39'56" West 87.36 feet;
- (23.) South 28°40'49" East 41.24 feet;
- (24.) North 51°53'55" East 69.06 feet;
- (25.) North 66°09'15" East 151.93 feet;
- (26.) North 89°56'47" East 161.51 feet;
- (27.) North 73°13'54" East 705.69 feet;
- (28.) North 65°14'21" East 89.32 feet;
- (29.) North 20°36'21" East 77.59 feet;
- (30.) South 45°39'16" East 92.04 feet;
- (31.) North 88°59'08" East 109.68 feet;
- (32.) North 69°48'04" East 307.89 feet;
- (33.) North 44°30'54" East 298.32 feet;
- (34.) North 32°12'27" East 343.84 feet;
- (35.) North 54°21'21" East 159.02 feet;
- (36.) North 89°58'02" East 316.33 feet;
- (37.) South 34°49'27" East 167.17 feet;
- (38.) South 58°27'30" East 315.26 feet;
- (39.) South 25°10'56" East 131.24 feet to the section line
common to said Section 18 and Section 17;

thence leaving said County Line in said Tuolumne County along last said section line North $00^{\circ}01'34''$ East 1207.95 feet to the southwestern line of State Highway 132;

thence leaving last said section line in said Section 17 along last said southwestern line the following seven (7) courses:

- (1.) North $89^{\circ}37'06''$ East 123.61 feet;
- (2.) South $74^{\circ}55'17''$ East 51.19 feet;
- (3.) South $69^{\circ}14'06''$ East 593.80 feet;
- (4.) South $62^{\circ}27'00''$ East 450.00 feet;
- (5.) South $14^{\circ}26'55''$ East 168.13 feet;
- (6.) North $81^{\circ}21'41''$ East 130.49 feet;
- (7.) South $40^{\circ}49'33''$ East 67.10 feet;

thence leaving last said southwestern line South $00^{\circ}06'18''$ West 693.96 feet to the center section line of said Section 17;

thence leaving last said center section line South $00^{\circ}04'37''$ East into said Mariposa County 2667.20 feet to the section line common to said Section 17 and Section 20;

thence leaving said Section 17 and running in said Section 20 the following five (5) courses;

- (1.) South $00^{\circ}11'26''$ West 4029.34 feet;
- (2.) North $89^{\circ}29'24''$ East 1339.19 feet;
- (3.) North $89^{\circ}16'52''$ East 1323.40 feet;
- (4.) North $00^{\circ}06'25''$ East 1346.29 feet;
- (5.) North $00^{\circ}10'50''$ West 219.88 feet to said county line;

thence leaving said Mariposa County and running in said Tuolumne County and in said Section 20 North $00^{\circ}10'50''$ West 2459.23 feet to the section line common to said Section 20 and said Section 17;

thence along last said section line North $89^{\circ}28'10''$ East 1313.60 feet to the section corner common to said Sections 20 and 17 and Sections 16 and 21;

thence along the section line common to said Sections 17 and 16 North $00^{\circ}12'54''$ West 2707.37 feet to the $\frac{1}{4}$ corner common to said Section 17 and 16;

thence continuing along last said section line North $00^{\circ}09'24''$ East 2647.74 feet to the section corner common to said Section 17 and 16 and Sections 8 and 9;

thence along the section line common to said Sections 8 and 9 North 00°11'33" East 2679.19 feet to the $\frac{1}{4}$ corner common to said Sections 8 and 9;

thence continuing along last said section line North 00°00'44" East 1348.29 feet;

thence leaving last said section line and running in said Section 8 South 89°57'40" West 1331.14 feet and North 00°19'05" West 1359.63 feet to the section line common to said Section 8 and Section 5;

thence leaving said Section 8 in Section 5 North 00°45'02" East 1338.22 feet and North 89°42'18" West 1336.28 feet to the center section line of said Section 5;

thence along last said center section line North 00°52'09" East 1334.72 feet to the center $\frac{1}{4}$ corner of said Section 5;

thence along the center section line of said Section 5 North 89°51'24" West 1375.20 feet;

thence leaving last said center section line North 02°00'46" East 1338.74 feet and South 89°19'52" West 1348.28 feet to the section line common to said Section 5 and Section 6;

thence along last said section line North 03°12'46" East 865.13 feet to the section corner common to said Section 5 and 6 and Section 32 and 31, T. 2S., R. 15E., M.D.M.;

thence leaving said Township 3 South in Township 2 South and in said section 31 the following eighteen (18) courses:

- (1.) South 88°57'28" West 215.78 feet;
- (2.) North 15°40'00" West 70.17 feet;
- (3.) North 32°16'00" East 279.10 feet;
- (4.) North 74°36'00" West 173.22 feet;
- (5.) South 70°06'00" West 253.06 feet;
- (6.) South 14°49'00" West 195.50 feet;
- (7.) North 37°52'00" West 438.27 feet;
- (8.) North 82°35'00" East 147.23 feet;
- (9.) North 13°52'00" East 333.73 feet;
- (10.) North 82°26'00" East 189.65 feet;
- (11.) North 41°16'00" East 206.21 feet;
- (12.) North 41°56'00" West 185.53 feet;
- (13.) North 28°47'00" East 162.01 feet;
- (14.) North 39°03'00" West 231.77 feet;
- (15.) South 67°06'00" West 251.85 feet;

(16.) North 19°49'00" West 339.10 feet;

(17.) North 80°56'00" East 716.96 feet;

(18.) North 53°29'00" East 147.86 feet to the section line common to said Sections 31 and 32;

thence along last said section line North 00°53'15" East 830.58 feet to the $\frac{1}{4}$ corner common to said Sections 31 and 32;

thence continuing along last said section line North 00°59'08" East 1338.87 feet;

thence leaving last said section line in said Section 32 South 89°54'56" East 1305.35 feet and North 00°34'54" East 1342.11 feet to the section line common to said Section 32 and Section 29;

thence along last said section line South 89°56'10" West 1295.95 feet to the section corner common to said Sections 32 and 29 and Sections 30 and 31;

thence along the section line common to said Sections 30 and 31 North 89°46'14" West 1357.32 feet;

thence leaving last said section line in said Section 30 North 00°37'48" West 1307.24 feet and North 89°03'58" East 1354.94 feet to the section line common to said Sections 30 and 29;

thence along last said section line North 00°43'35" West 1334.79 feet to the $\frac{1}{4}$ corner common to said Sections 30 and 29;

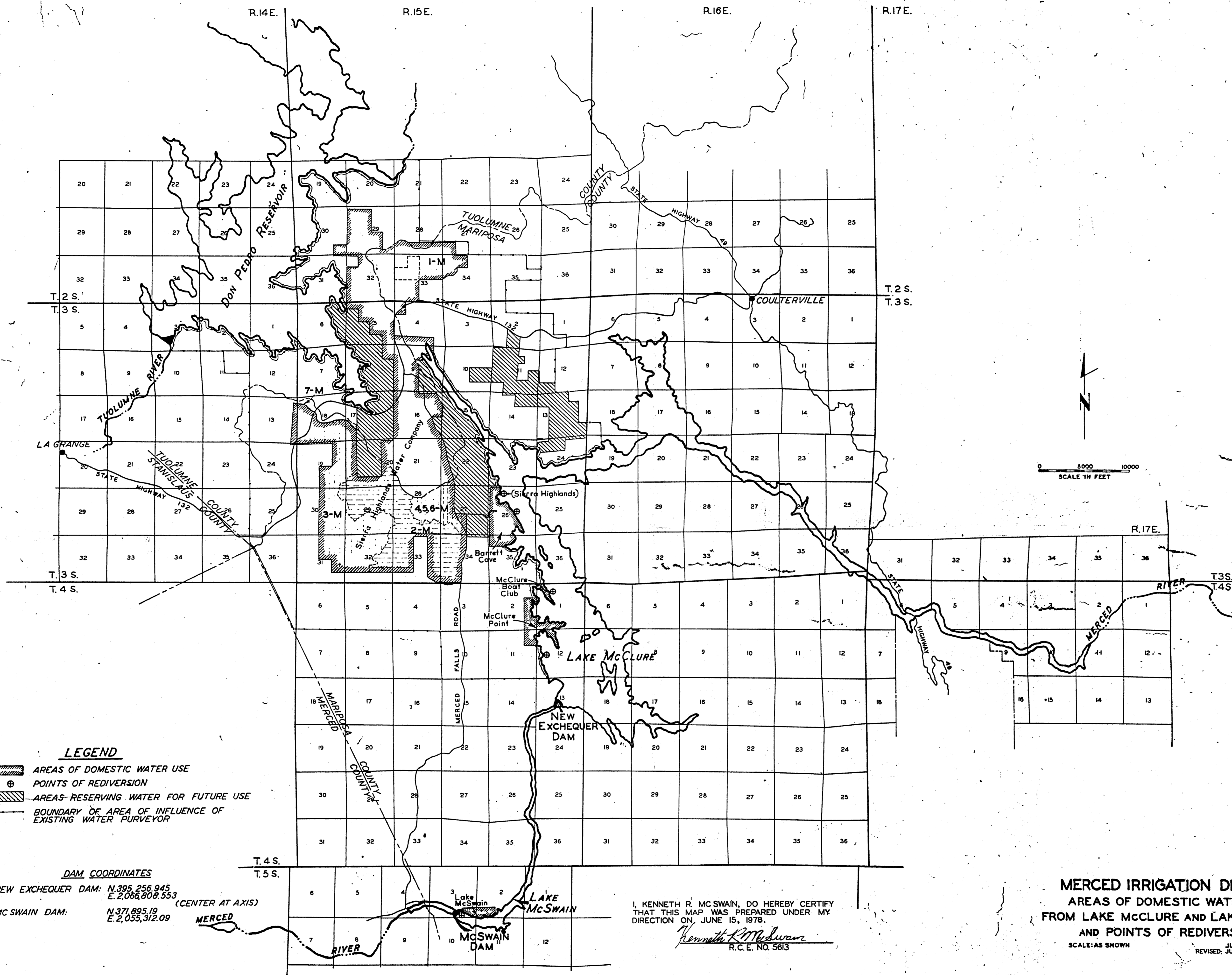
thence continuing along last said section line North 00°51'15" East 2629.85 feet to the section corner common to said Sections 30 and 29 and Sections 19 and 20, being the point of beginning of this description and containing 9027.03 acres more or less.

Saving and excepting therefrom in the hereinabove described lands the Northwest $\frac{1}{4}$ of the Southeast $\frac{1}{4}$ of Section 32; T. 2S., R. 15E., M.D.M. containing 38.4 acres more or less

Bearings in the above description are based on the California State Co-ordinate System, Zone III.

Distances in the above description are grid distances. To obtain ground distances, divide grid distances by a combined grid factor of 0.9998814.





- LEGEND**
- AREAS OF DOMESTIC WATER USE
 - POINTS OF REDIVERSION
 - AREAS RESERVING WATER FOR FUTURE USE
 - BOUNDARY OF AREA OF INFLUENCE OF EXISTING WATER PURVEYOR

DAM COORDINATES
 NEW EXCHEQUER DAM: N. 395,256.945
 E. 2,066,809.553
 (CENTER AT AXIS)
 MCSWAIN DAM: N. 371,895.19
 E. 2,055,312.09

I, KENNETH R. MCSWAIN, DO HEREBY CERTIFY THAT THIS MAP WAS PREPARED UNDER MY DIRECTION ON JUNE 15, 1978.
Kenneth R. McSwain
 R.C.E. NO. 5613

MERCED IRRIGATION DISTRICT
AREAS OF DOMESTIC WATER USE
FROM LAKE McCLURE AND LAKE MCSWAIN
AND POINTS OF REDIVERSION
 SCALE: AS SHOWN
 JUNE 26, 1977
 REVISED: JUNE 15, 1978

13-02

Rec'd 7/23/78

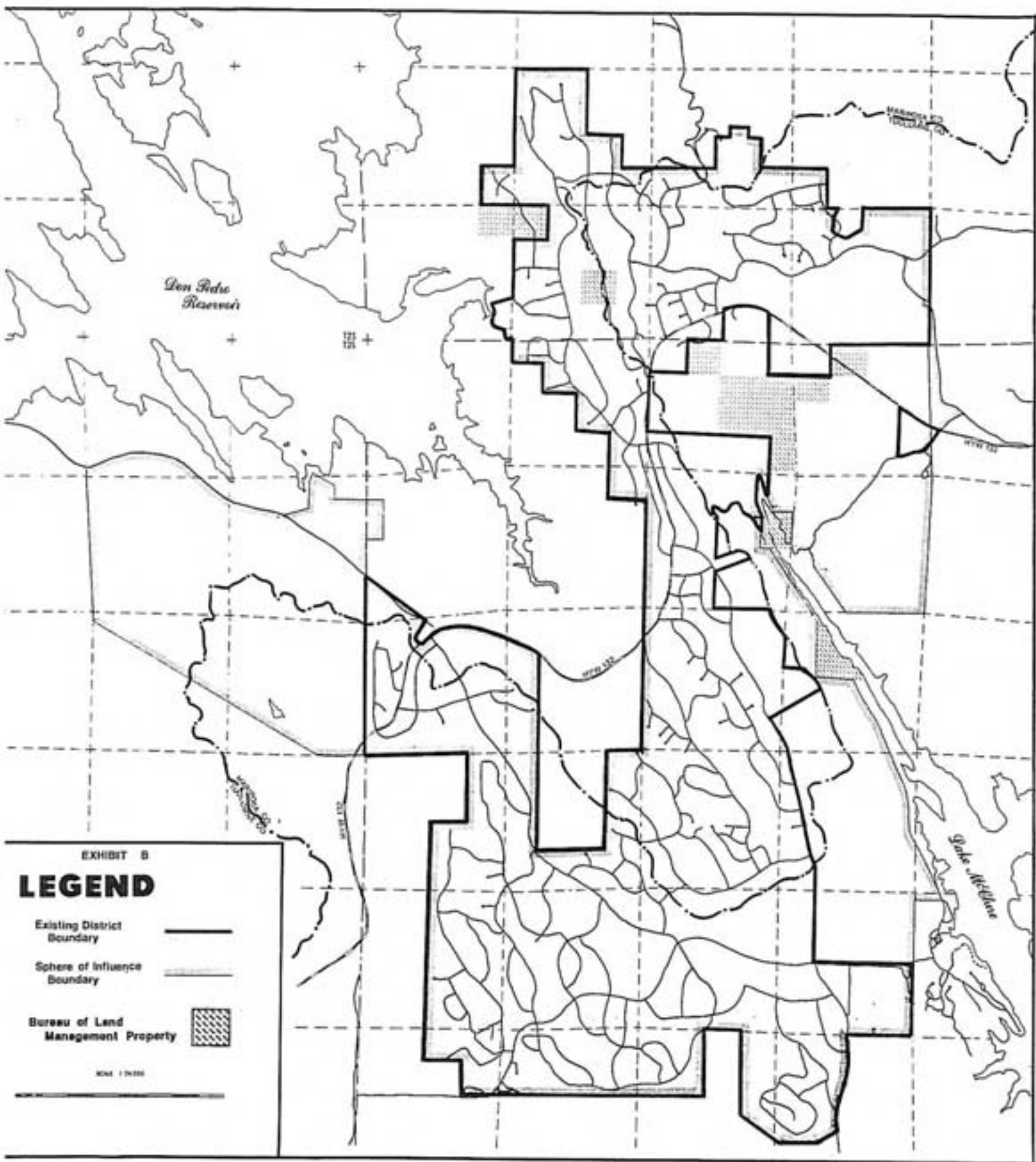


EXHIBIT B

LEGEND

Existing District Boundary ———

Sphere of Influence Boundary - - - - -

Bureau of Land Management Property [Cross-hatched box]

1 MILE

influence change is necessary, a municipal services review will need to be completed prior to or concurrently with any changes. When the SOI was adopted, it concluded that the NPS and County are providing adequate services to the district. LAFCo could consider whether other services should be provided to the district. At this time, a review of the SOI is not necessary. If circumstances change with regards to the MOU and the NPS, LAFCo should study the need to update the SOI.

19.040 County Service Area No. 3 Fire Protection

- A. **Area and Sphere of Influence:** This dependent district serves most of Mariposa County with the exception of those properties within the Mariposa Public Utility District. The District was created in May of 2008. The district provides structural fire protection for all properties with structures. A sphere of influence has not adopted for the district.
- B. **Authorized Functions:** The district is authorized to provide structural fire protection services.
- C. **Policy:**
1. State law mandates that a municipal service review must be prepared prior to, or concurrently with, any proposed changes to a district's sphere of influence. A municipal service review has not been prepared for County Services Area No. 3.
 2. A SOI needs to be established for the district.
 3. A MSR needs to be prepared for CSA No.3. Until a municipal service review is prepared, the sphere of influence cannot be updated, if necessary.

19.050 Lake Don Pedro Community Services District

- A. **Area and Sphere of Influence:** This independent district serves the Lake Don Pedro subdivision in both Mariposa and Tuolumne counties and some adjacent properties. The sphere of influence generally encompasses the properties between the Don Pedro Reservoir and Lake McClure. The district was formed in 1980, and the SOI was adopted in 1987.
- B. **Authorized Functions:** The district was authorized by the Commission to provide "sewer and water services" to the inhabitants of the district. Specifically, the district is authorized to provide the following services:

1. To supply the inhabitants of the district with water for domestic use, irrigation, sanitation, industrial use, fire protection, and recreation.
2. The collection, treatment or disposal of sewage, waste and storm water of the district and its inhabitants.

C. Policy:

1. State law mandates that a municipal service review must be prepared prior to, or concurrently with, and proposed changes to a district's sphere of influence. A municipal service review has not been prepared for the Lake Don Pedro Community Services District (LDPCSD).

In 2008, LAFCo staff did discuss the preparation of a municipal services review with the LDPCSD General Manager, with the intention of hiring a consultant to prepare the municipal service review and possible change to the sphere of influence. A draft request for proposals was prepared and submitted to the General Manager, but was never taken forward. Since that time the district's Board has not taken any action that would indicate that the sphere of influence should be changed.

2. Commission policy requires a sphere of influence to be updated every five (5) years as necessary. The current district sphere of influence was adopted in 1987. The sphere of influence cannot be changed until a municipal service review is completed prior to, or concurrently with, any changes.
3. At this time, a SOI update is not necessary for the district. Until such time as the district determines that a SOI update is necessary, LAFCo will not modify the SOI or require that a MSR be prepared for the district.
4. A MSR will need to be prepared prior to, or concurrently with, any update to the SOI.

D. Principal County:

1. The district is located in both Mariposa and Tuolumne counties, and Mariposa County was designated as the principal county for the formation of the district. The principal county is the county having all or the greater portion of the entire assessed value, as shown on the last equalized assessment roll of the county or counties, of all taxable property within a district. The assessed value of LDPCSD properties for FY 2010-2011 in Tuolumne County was \$127,690,000 and in Mariposa County \$197,400,000. Based on these figures, Mariposa County is the principal county, and with this designation, the Mariposa Local Agency Formation Commission assumed exclusive LAFCo jurisdiction for all proposals involving the district in accordance with Sections 56387 and 56388 of the

Reorganization Act. The assessed value of LDPCSD properties shall be updated periodically to confirm in subsequent years the principal county for LDPCSD matters.

2. For all proposals, including an update to the sphere of influence, which involves territory in Tuolumne County, the Commission shall request formal review of the proposal and a recommendation by the Tuolumne Local Agency Formation Commission. The Commission shall consider the comments and recommendations of the Tuolumne LAFCo in the Commission's consideration of the proposal and make necessary findings to address the Tuolumne LAFCo's comments and recommendations.

E. Wastewater Treatment Facilities:

1. The existing wastewater treatment facilities providing wastewater service to properties within the LDPCSD under County Service Area 1-M (CSA1-M) are outside of the District's boundary and its sphere of influence.

When CSA1-M was created, the wastewater treatment facilities were within the LDPCSD and the CSA1-M boundaries. Subsequent failure of the facilities required that the facility be constructed on land in close proximity to the old facility and the existing sewer main infrastructure be used for the new wastewater treatment plant. The only property available was outside of the district's boundary and its SOI.

2. While there are no legal mandates that these facilities be within the district's boundary or sphere of influence (SOI), when the boundary or SOI is changed for any other reason, these should both be changed so that the facility is in the boundary and the SOI.

F. Transfer of Don Pedro Sewer Zone No. 1:

1. The following condition of approval was attached by the Commission to the formation of the district:

"A zone of benefit shall be created within the Lake Don Pedro Community Services District ("LDPCSD") with boundaries coextensive with the present boundaries of the County sewer zone. The County shall transfer the assets and liabilities of the sewer zone to the LDPCSD, and the LDPCSD will accept same, subject to an agreement to be negotiated and executed between the County Sewer Zone and the LDPCSD in which the County will agree to subsidize the deficits of the LDPCSD's provision of sewer service within the zone of benefit, not to exceed the extent that such deficits result from the loss of property tax revenue that would have been available were this to remain a County sewer zone not to exceed the current amount of revenue. Such

agreement would further provide that the County's obligation to subsidize the providing of sewer service would be decreased pro rata by additional revenues generated by connection fees and service fees of users of the system. The County shall be relieved of all liability to subsidize the sewer system's operations at such time as the LDPCSD has either the legal ability to accept property tax revenues formerly received by the County Sewer Zone or the LDPCSD has the legal ability to impose sewer stand-by charges."

In 2007/2008, a new wastewater treatment plant was constructed in the service area. A municipal service review was prepared in 2008 that covered the wastewater service area.

To date, the sewer zone and its facilities and services have not been transferred to the Lake Don Pedro Community Services District in accordance with the established condition of approval.

2. It is the position of the Commission, but not the District, that the above condition is still applicable. The Board of Directors of the LDPCSD and the Mariposa County Board of Supervisors should meet and confer in good faith regarding the ownership and operation of the sewer zone. The terms of the condition may be amended by the Commission upon request from the LDPCSD Board of Directors and the Board of Supervisors.

19.060 Mariposa Public Utilities District

- A. **Area and Sphere of Influence:** This independent district serves most properties in the Town of Mariposa TPA except for the Fairgrounds area and the area north of John C. Fremont Hospital. In addition to the existing district, the adopted sphere of influence includes the area north of the hospital. The district was formed in 1947, and the SOI was adopted in February of 1980.
- B. **Authorized Functions:** The district is authorized to provide all services for which a public utilities district is authorized to provide. These services are listed in Section 18.030(C). The district presently provides water, wastewater treatment, and fire protection services.
- C. **Policy:**
 1. A municipal service review for the district was completed in 2008.
 2. The current SOI boundary was established so that it was co-terminus with the Mariposa Town Planning Area boundary that was in place at that time. In 2006, the Mariposa County General Plan was updated, and the current General Plan proposes possible expansion of the Mariposa Town Planning Area boundary.

CHAPTER 12

MUNICIPAL SERVICE REVIEWS

Sections:

12.010	Background
12.020	Local Agency Formation Commission Jurisdiction, Administrative Requirements and Responsibilities
12.030	Procedures for Adopting Municipal Service Reviews
12.040	Actions at Meetings and Hearings
12.050	Municipal Service Review Contents and Written Determinations

12.010 Background

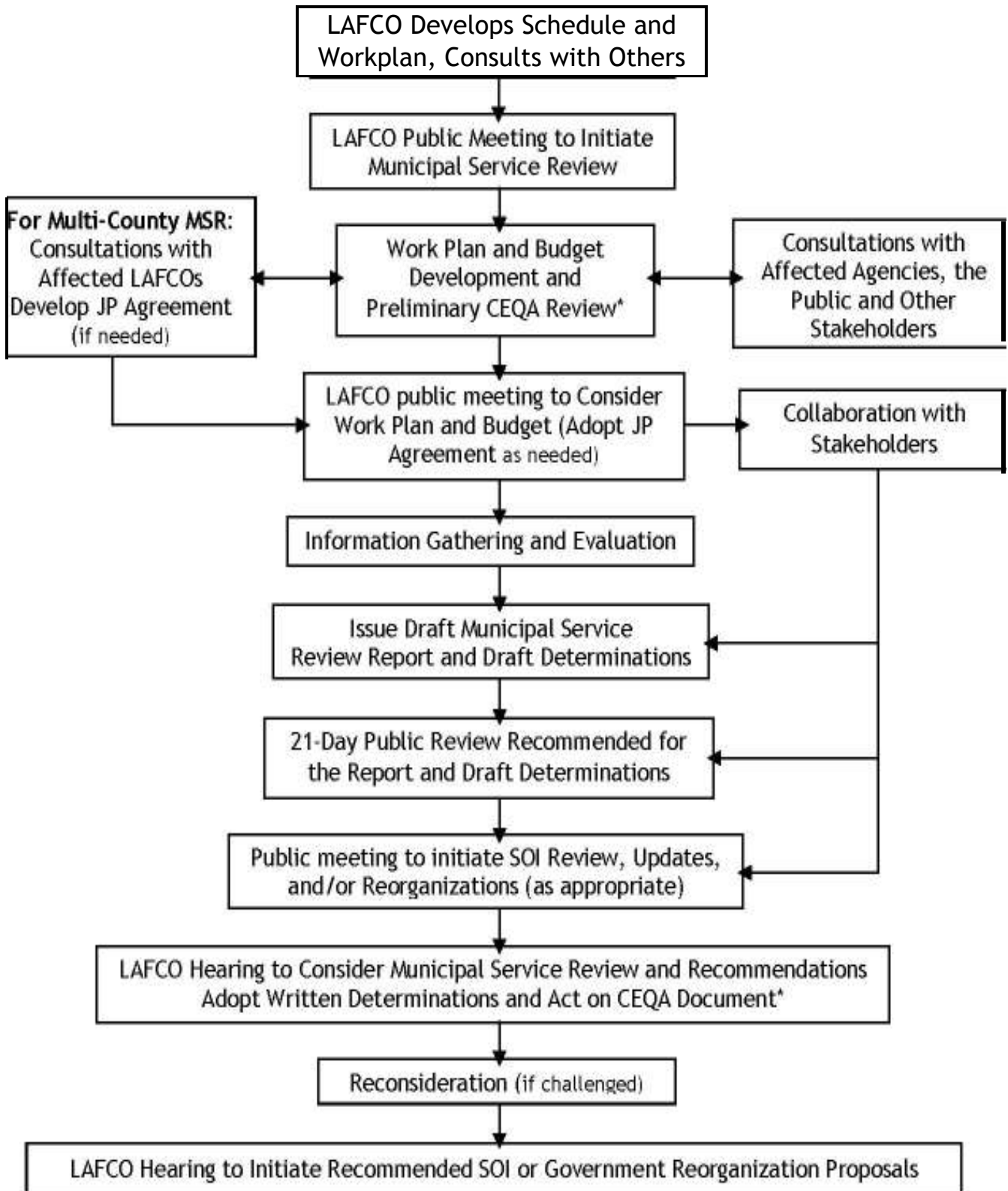
The Cortese-Knox-Hertzberg Local Reorganization Act of 2000 (CKH Act) establishes procedures for local government changes of organization. The CKH Act also requires LAFCo to review and as necessary update the Spheres of Influence (SOI) of all local agencies within the county. A local agency is defined as any city, county, or district or special district. A Sphere of Influence is defined as a plan for the probable physical boundary and service area of a local agency or municipality. A Municipal Service Review (MSR) must be conducted for each local agency to update the SOIs.

The Governors Office of Planning and Research (OPR) has prepared guidelines for LAFCo to conduct reviews of California municipal services. OPR published the Final Guidelines in August 2003. The CKH Act, together with OPR's guidelines, requires LAFCo to conduct a comprehensive review of all agencies that provide services within the county. The service reviews must prepare a written statement of LAFCo's determination with respect to each of the following items, as amended by Assembly Bill 1744 in September, 2007, and by Senate Bill 244 passed in 2011:

- Growth and population projections
- The location and characteristics of any disadvantaged unincorporated communities, as defined by Government Code Section 56033.5, within or contiguous to the sphere of influence
- Present and planned capacity of facilities and adequacy of services, including infrastructure needs and deficiencies
- Financing ability of agencies to provide services
- Status of and opportunities for shared facilities
- Accountability for community services needs, including Government structure and operational efficiencies
- Any other matter related to effective and efficient service delivery, as required by commission policy

The guidelines include an example of a recommended MSR review process that can help clarify the role and the steps that might be taken in the preparation of a MSR and subsequent actions on a SOI.

EXAMPLE OF OPR RECOMMENDED MUNICIPAL SERVICE REVIEW PROCESS



12.020 Local Agency Formation Commission Jurisdiction, Administrative Requirements and Responsibilities

The Municipal Service Review (MSR) is a tool that can be used by LAFCo to collect information and evaluate service provisions and service providers from a broader perspective. As mentioned elsewhere in this document, an approved MSR is required before LAFCo can adopt or update a SOI. It should be noted that the MSR process and approval will not always result in adopting or updating a SOI. While State law does provide that a MSR can be conducted in conjunction with an action to establish or update a SOI, the two processes and actions are distinct and separate functions under the LAFCo authorities.

According to the MSR Guidelines, prepared by the State Office of Planning and Research, a MSR can be used to:

- Promote orderly growth and development in appropriate areas with consideration for service feasibility, costs, the preservation of open space, agricultural lands, and finite natural resources;
- Encourage infill development and direct growth to areas that are planned for growth in General Plans;
- Learn about service issues and needs;
- Plan for provisions of quality infrastructure needed to support growth;
- Develop a structure for dialog among agencies that provide services;
- Develop strategies to avoid unnecessary costs, eliminate waste, and improve public service provisions;
- Provide ideas on opportunities to streamline service provisions through the use of shared facilities, joint service agreements, or integrated planning and service delivery; and
- Promote shared resource acquisition and joint funding requests or strategies.

The information, recommendations and determinations contained in a MSR are intended to guide and inform SOI decisions for both the local agency and LAFCo. Therefore, for the MSR to be relevant to SOI decisions, it needs to discuss the SOI for any local agency being reviewed. However, the statutory determinations (Section 12.010 above) mandated on LAFCo for the MSR process do not include any specific determination on the SOI of a local agency.

Section 65430 of the Government Code provides the statutory requirements for the preparation of a MSR by the LAFCo. The LAFCo has sole responsibility and jurisdiction in the preparation, review and approval of the MSR. The adoption of an MSR is a separate and distinct process from such actions as adopting or updating a SOI, annexations, or modifying agency boundaries by the LAFCo.

12.030 Procedures for Adopting Municipal Service Reviews

- A. A formal public review period on the draft municipal service review report will be established, and at least one public meeting and/or workshop should be held prior to the report being considered by LAFCO. It may be helpful to conduct a stakeholder meeting during the review period to obtain constructive input from those who helped shape the municipal service review.
- B. Comments received during the public review period should be considered and incorporated in the final report as appropriate. Any person or entity that submits comments should receive a copy of the final municipal service review report and a mailed notice of the public meeting or hearing at which the municipal service review determinations will be considered by the Commission.
- C. The determinations will still be draft until they are accepted/adopted by the Commission. The Final Municipal Service Review Report, at a minimum, will be issued 21 calendar days in advance of the hearing or public meeting at which the determinations will be adopted/accepted. If the determinations will be adopted at a hearing, the issuance of the final report should be concurrent with the 21 calendar day hearing notice.
- D. The Final Municipal Service Review Report is required to be considered by the Commission at a noticed public meeting. GC §56150-§56160 include public notice provisions. GC §56154 and §56156 require that published and mailed notice be provided at least 21 calendar days prior to the public hearing. All affected and interested agencies, and persons and entities requesting notice, should receive a mailed notice.

12.040 Actions at Meetings and Hearings

The meeting or hearing should be conducted consistent with LAFCO's adopted written procedures. If LAFCO chooses to make its determinations at a hearing, here are some additional actions that the Commission could take, include the following:

- **Adoption of Resolution of Written Determinations**

Service review determinations should be adopted by Resolution.

- **Adoption of Municipal Service Review Recommendations**

The Commission may adopt staff recommendations and direct staff to take follow up actions as appropriate.

- **Adoption of City or District SOI Updates or Amendments**

If the municipal service review supports a particular action such as an SOI update or amendment, and LAFCO has complied with required processes, those actions could be approved at the same hearing.

• Initiation or Adoption of Other Proposals

If the municipal service review supports a particular action such as an initiation or adoption of an organization or reorganization proposal, and LAFCO has complied with required processes, those actions could be approved or initiated at the same hearing.

If the Commission accepts the determinations at a public meeting, then existing law does not require a reconsideration process. This lack of a reconsideration process and its potential for correcting and/or modifying the determinations, is one reason the Office of Planning and Research (OPR) recommends that the determinations be formally adopted at a public hearing.

12.050 Municipal Service Review Contents and Written Determinations:**A. The Municipal Service Review Report will have the following contents at a minimum:**

- An Executive Summary
- Review of baseline data and information related to the service or services being reviewed
- A description of the public participation process
- An analysis of services, service providers and other issues consistent with the intent of the CKH Act (GCs §56001, §56300, §56301), and including, but not limited to, factors to be considered (§56668), areas of required determination (§56430), SOI concerns (§56425, §56425.5) and environmental justice issues, if any
- Draft Determinations. (see Section B below for more information)
- Follow-up recommendations, if any
- Appropriate maps that identify service areas, and clearly delineate overlapping areas using GIS generated maps, if available, to ensure consistency among agencies

B. The Municipal Service Review Guidelines require written determinations in nine categories. These categories are:**1. Infrastructure Needs and Deficiencies**

In identifying an agency's infrastructure needs and deficiencies, LAFCO may wish to address the following factors in its review:

- a) Government restructure options to enhance and/or eliminate identified infrastructure needs and/or deficiencies.

- b) Expansion of services to eliminate duplicate infrastructure construction by other agencies.
- c) Condition of infrastructure and the availability of financial resources to make necessary changes.
- d) Level of service and condition of infrastructure in light of revenue and operating constraints.
- e) Infrastructure capabilities to accommodate future development with flexible contingency plans.
- f) Reserve capacity for properties not served within current boundaries and estimate of properties within current boundaries not eligible for service.
- g) Provisions for adequate service for properties not currently being served within current boundaries.
- h) Location of existing and/or planned facilities.
- i) Location of existing and/or planned facilities in relation to area demographics.
- j) Location of existing and/or planned infrastructure in relation to affordable housing programs.
- k) Compliance with environmental and safety standards.
- l) Income levels of existing households and earnings of businesses within the study area.
- m) Current placement of infrastructure in the county as a whole and in the study area.
- n) Applicable permit status.
- o) Consistency with service and/or capital improvement plans and local and regional land use plans/policies.

2. Growth and Population Projections for the Affected Area

In identifying an agency's growth and population projections, LAFCO may wish to address the following factors in its review:

- a) Projected growth and demographic changes in and around the agency's service areas.
- b) Historic and expected land use absorption trends.
- c) Estimate of future service needs.
- d) Impact of land use plans and growth patterns on service demands.
- e) Impact of service plans and policies on growth and/or land use patterns for adjacent areas, on mutual or regional social and economic interests, and on the local governmental structure of the county.

- f) Relationship between an agency's boundary and SOI with the projected growth in the study area.
- g) Compatibility of service plan(s) with other local agency land use/development plans.
- h) Projected household size of new and existing residential dwellings.
- i) Compatibility between agency service plans, regional growth projections and efficient urban development.

3. Financing and Constraints and Opportunities

In identifying an agency's financing constraints and opportunities, LAFCO may wish to address the following factors in its review:

- a) Implementation of appropriate financing/funding practices.
- b) Potential for shared financing and/or joint funding applications.
- c) Combination of enterprise and/or non-enterprise financing functions.
- d) Comparative analysis of financing rates among other agencies in study area.
- e) Bond rating(s).
- f) Ability to obtain financing.
- g) Existing and/or proposed assessment district(s).
- h) Debt-to-services ratio by area and subarea incomes.
- i) Opportunities for additional revenue streams, including joint agency grant applications, untapped resources, or alternative government structures.
- j) Methods to pay down existing debt(s), including using excess revenues.

4. Cost Avoidance Opportunities

In identifying an agency's cost avoidance opportunities, LAFCO may wish to address the following factors in its review:

- a) Opportunity for joint agency practices, including shared insurance coverage opportunities.
- b) Availability of outsourcing for financial and administrative duties, and cost-benefits of outsourcing versus in-house management.
- c) Duplication of services.
- d) Impact of service practices and/or facilities in relation to land: available for infill; where excess capacity exists; planned for growth; easiest to serve; with the fewest topographic and geographic constraints; and in a manner that supports affordable housing objectives.

- e) Impact of service practices and/or facilities in relation to benefit/detriment of service cost.
- f) Impact of growth inducement measures on construction costs and near-term infrastructure deficiencies.
- g) Policies and/or plans to extend services to an area proposed for annexation or new development, particularly with respect to the impact of extending services on existing customers.
- h) Impact of service practices and/or facilities on affordable housing objectives.
- i) Impact of additional services/capacity on agency's fiscal viability, including cost and adequacy of services in existing or proposed service areas and/or areas served by other special districts, cities, or the county.
- j) Relationship between current level of service and customer needs and preferences.
- k) Opportunities for savings or augmentation in overhead, including employee salary or benefits, elected official compensation or benefits, equipment purchases, planning, etc.
- l) Pro-rata service costs for customer/ratepayer and/or taxpayer.
- m) Application and/or bid process for contractor assistance, including comparison of rates.

5. Opportunities for Rate Restructuring

In identifying an agency's opportunities for rate restructuring, LAFCO may wish to address the following factors in its review:

- a) Agency's methodology for determining rates.
- b) Availability of revenue enhancement opportunities to lessen and/or stabilize rates.
- c) Relationship between rate differences among service providers and levels of service.
- d) Rate comparison between service providers with similar service conditions.
- e) Cost of services versus fees.
- f) Rate comparison between sub-regions based on demographic information.
- g) The services that ratepayers and/or assessed properties are receiving for which they are paying.
- h) Financial impacts on existing customers caused by the funding of infrastructure needed to support new development.

- i) Impacts of standby rates (charges assessed to under-or-undeveloped land used for rural, agricultural or open space uses) on open space and affordable housing plans.
- j) Relationship between rate and service polices and the provision of decent and affordable housing.
- k) Availability of reasonable emergency reserves.
- l) Use of annual savings.

6. Opportunities for Shared Facilities

In identifying an agency's opportunities for shared facilities, LAFCO may wish to address the following factors in its review:

- a) Current shared activities with other service providers, including shared facilities and staff.
- b) Suggested existing and/or future shared facility opportunities by the agency.
- c) Opportunities for conjunctive and/or joint use projects, such as groundwater storage/parks, schools/parks, or flood detention/parks.
- d) Duplication of existing and/or planned facilities of other service providers.
- e) Availability of excess capacity to serve customers of other agencies.

7. Government Structure Options

In identifying an agency's government structure options, LAFCO may wish to address the following factors in its review:

- a) Available government options to provide more logical service boundaries to the benefit of customers and regional planning goals and objectives.
- b) Recommendations by a service provider and/or an interested party for government options.
- c) Anticipated proposals to LAFCO that will affect the service provider.
- d) Prior proposals or attempts by the agency to consolidate and/or reorganize.
- e) Availability of government options that improve public participation, local accountability, and governance.
- f) Impacts of government structures on the potential for displacement of current residents.
- g) Opportunities to create definite and certain boundaries that conform to lines of assessment or ownership and/or eliminate islands, corridors of unincorporated territory, and other difficult or illogical service areas.
- h) Existing boundary disputes.

- i) Elimination of overlapping boundaries that confuse the public, cause service inefficiencies, unnecessarily increase in the cost of infrastructure, exacerbate rates and/or undermine good planning practices.
- j) Reevaluation of boundaries, including downsizing SOI boundaries and/or approving other boundary modifications that remove important open space and agricultural lands from urban services areas.
- k) Availability of government options that stabilize, steady and/or clarify the government process in order to reduce costs or increase customer satisfaction.
- l) Availability of government options that may produce economies of scale and improve buying power in order to reduce service and housing costs.
- m) Availability of government options that allow appropriate facilities to be shared and avoid the construction of extra and/or unnecessary infrastructure.
- n) Making excess capacity available to other service users in order to eliminate duplicate infrastructure construction by multiple agencies and reduce costs to customers.
- o) Opportunities to improve the availability of water rights and/or supplies (surface, reclaimed or groundwater) to a larger customer base through a change in government organization.
- p) Availability of government options that could facilitate construction, financing and/or eliminate the need for new facility construction.
- q) Cost-benefit of restructuring current governing body and/or administration to any proposed alternative.
- r) Cost-benefit of restructuring overhead, including staff, capital outlays, allocation of reserves or savings, loaded administrative charges for grant administration, accounting, and other contracted services.
- s) Cost-benefit of restructuring the direct distribution of costs or debts from shared facilities to a larger user population.
- t) Opportunities for the sale of surplus properties through a change in government organization.
- u) Availability of excess reserves for service improvements and/or rate reductions through a change in government organization.
- v) Opportunities to enhance capital improvement plans and programs through a change in government structure.
- w) Opportunities to streamline services through the reorganization of service providers that no longer provide services for which they were formed.
- x) Opportunities for early debt repayment and related savings through a change in government structure.

- y) Elimination of rate structures that impose growth pressures on open space resources.
- z) Identification of illogical boundaries and their effect on rates.
- aa) Impact of government structure options on an agency's financial stability.
- bb) Rationale for an agency's emergency and/or undesignated reserves (fund equity or balance), particularly in relation to their gross annual revenue.
- cc) Changes and/or modifications in boundaries in order to promote planned, orderly, and efficient patterns of urban development.
- dd) Changes and/or modifications in boundaries in order to avoid premature inducement, facilitation, or conversion of existing open space lands, including: the direction of growth away from prime agricultural and important open space lands towards infill areas or areas containing nonprime agricultural land; the development of vacant land adjacent to existing urban areas and within existing spheres of influence.
- ee) Boundary adjustments in order to minimize the amount of land needed to accommodate growth in the next 5-10 years within the spheres of influence of special districts and cities.
- ff) Prevention of extensions of urban services to important agriculture and open space areas not planned for growth or within the boundaries of the city or special district.
- gg) Impact of a change in government structure on the implementation of regional transportation, water quality, air quality, fair share housing allocation, environmental justice, airport land use, open space, agricultural, and other environmental polices or programs.
- hh) Impacts of government structures on fair housing programs.
- ii) Available government options that improve the ability to provide and explain budget and financial data.
- jj) Opportunities for improvement in the quality and/or levels of service through changes in government structure.
- kk) Impact of investment policies on service levels and quality.
- ll) Evaluation of bond rates, ability to borrow or obtain grants, budget practices and other aid.
- mm) Ability to gain environmental benefits (wetland restoration, water conservation, and other conservation policies) through government structure options.
- nn) Opportunities to integrate services without excessive cost.

- oo) Cost-benefit analysis of potential changes in government structure through merging staff, staff reduction by attrition, phasing out of elected or appointed positions, and management staff.
- pp) Opportunities for improved service delivery and/or an increase in system standards by system integration through changes in government structure.
- qq) Identify prohibitions in the affected Principal Acts that would affect government structure options, including pending litigation, court judgments, other legal issues, restricted assets, financial or other constraints.
- rr) Integration of debts and obligations analyses.
- ss) Potential successor agencies.
- tt) Impact on existing systems (upgrades) due to government structure changes.
- uu) Impact on operating cost (short and long term) due to government structure changes.
- vv) Evaluation of long term savings through government structure changes versus related transition costs.
- ww) Evaluation of permit status upon integration.

8. Evaluation of Management Efficiencies

In evaluating an agency's management efficiencies, LAFCO may wish to address the following factors in its review:

- a) Evaluation of agency's capacity to assist with and/or assume services provided by other agencies.
- b) Evaluation of agency's spending on mandatory programs.
- c) Comparison of agency's mission statement and published customer service goals and objectives.
- d) Availability of master service plan(s).
- e) Contingency plans for accommodating existing and planned growth.
- f) Evaluation of publicized activities.
- g) Implementation of continuous improvement plans and strategies for budgeting, managing costs, training and utilizing personnel, and customer service and involvement.
- h) Evaluation of personnel policies.
- i) Availability of resources (fiscal, manpower, equipment, adopted service or work plans) to provide adequate service.
- j) Available technology to conduct an efficient business.

- k) Collection and maintenance of pertinent data necessary to comply with state laws and provide adequate services.
- l) Opportunities for joint powers agreements, Joint Powers Authorities, and/or regional planning opportunities.
- m) Evaluation of agency's system of performance measures.
- n) Capital improvement projects as they pertain to GC §65401 and §65103c.
- o) Evaluation of accounting practices.
- p) Evaluation of maintenance of contingency reserves.
- q) Written policies regarding the accumulation and use of reserves and investment practices.
- r) Impact of agency's policies and practices on environmental objectives and affordable housing.
- s) Review of environmental and safety compliance measures.
- t) Current litigation and/or grand jury inquiry involving the service under LAFCO review.

9. Local Accountability and Governance

In evaluating an agency's local accountability and governance structure, LAFCO may wish to address the following factors in its review:

- a) Compliance with state disclosure laws and the Brown Act.
- b) Level of public participation (i.e. open meetings, accessible staff and elected officials, an accessible office open to the public, a phone and/or message center, a web site, customer complaint and suggestion opportunities).
- c) Agency representatives (i.e., board members, employees, and staff).
- d) Public outreach efforts (i.e. newsletters, bill inserts, TV, web site).
- e) Media involvement (i.e. meetings publicized, evening board meetings, evening or weekend public planning sessions).
- f) Accessibility of meetings (i.e. meetings publicized, evening board meetings, evening or weekend public planning sessions and translations for non-English speakers and the hearing impaired).
- g) Election process.
- h) Participation of service users in elections (i.e. elections publicized, day and evening voting).
- i) Public access to adopted budgets.
- j) Budget reports' compatibility with state law.

- k) Audits.
- l) Access to program progress reports.
- m) Current provision of service(s).